

TRAFFIC CALMING DISTRICT 21-18-07

DELCOURT DR

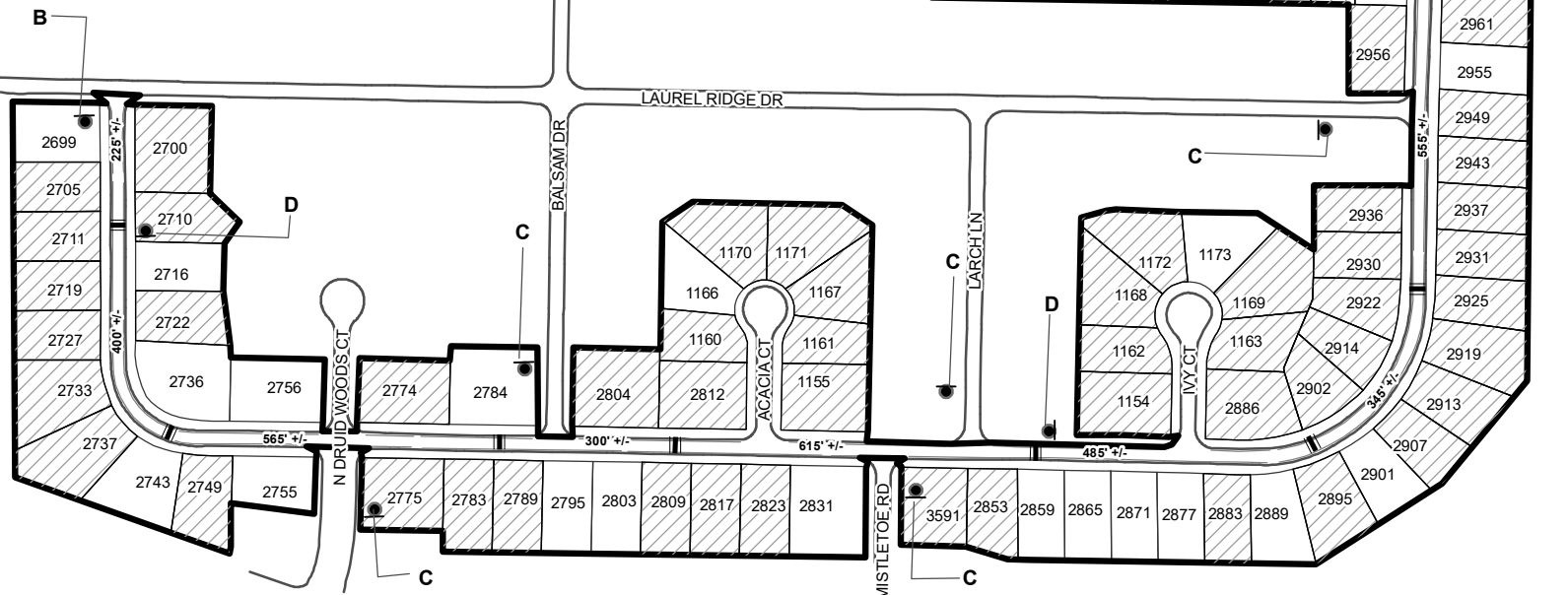
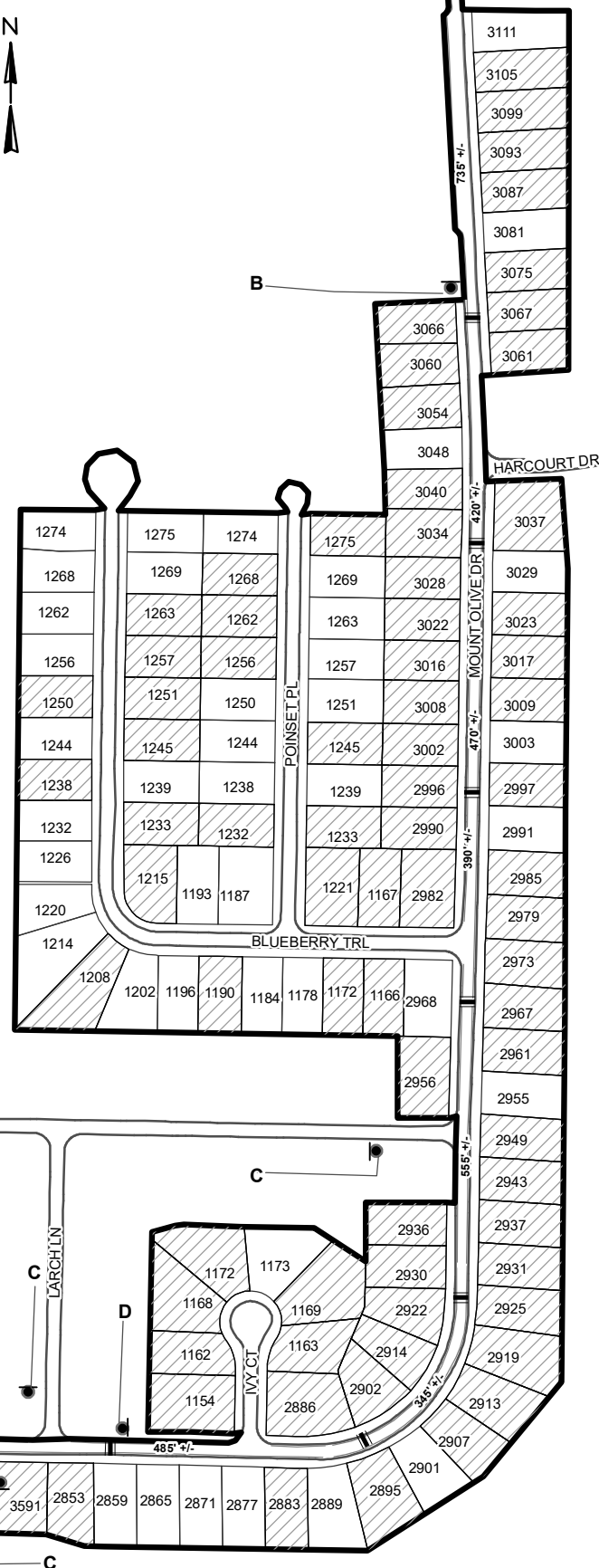


LEGEND

- AFFECTED AREA
 - YES VOTES (101)
 - SPEED TABLES (11)
 - STRIPING
 - PARCEL BOUNDARY AND ADDRESS NUMBER
 - TRAFFIC CALMING DISTRICT SIGNS
 - SPEED HUMPS AHEAD SIGN AND ADVISORY 15 MPH SPEED PLAQUE
 - SPEED HUMP AHEAD SIGN, CROSS STREET, AND ADVISORY 15 MPH SPEED PLAQUE
 - SPEED HUMP SIGN AND DOWNWARD DIAGONAL LEFT ARROW PLAQUE
- 123 +/- DISTANCE BETWEEN TRAFFIC CALMING MEASURES (CENTER TO CENTER) & DISTANCE BETWEEN TRAFFIC CALMING MEASURES AND END OF STREET

NOTES:

- 1) NUMBER OF PARCELS IN AFFECTED AREA: 154
- 2) STREET(S) IN AFFECTED AREA: MT OLIVE DR, ACACIA CT, BLUEBERRY TRL, IVY CT, POINSET PL, & MISTLETOE RD
- 3) EDGE OF TRAFFIC CALMING MEASURE NOT TO ENCROACH WITHIN 5' OF DRIVEWAY RETURNS



DEKALB COUNTY TRANSPORTATION DIVISION TRAFFIC CALMING SECTION	DRAWN BY: AE	SCALE: N.T.S.	MOUNT OLIVE DRIVE DIST: 18 TH LAND LOT: 115 COMMISSION DISTRICTS: 4 & 6
	REVIEWED BY: AE		
	REVIEWED BY:	Date: 10/12/2021	
	REVIEWED BY:		