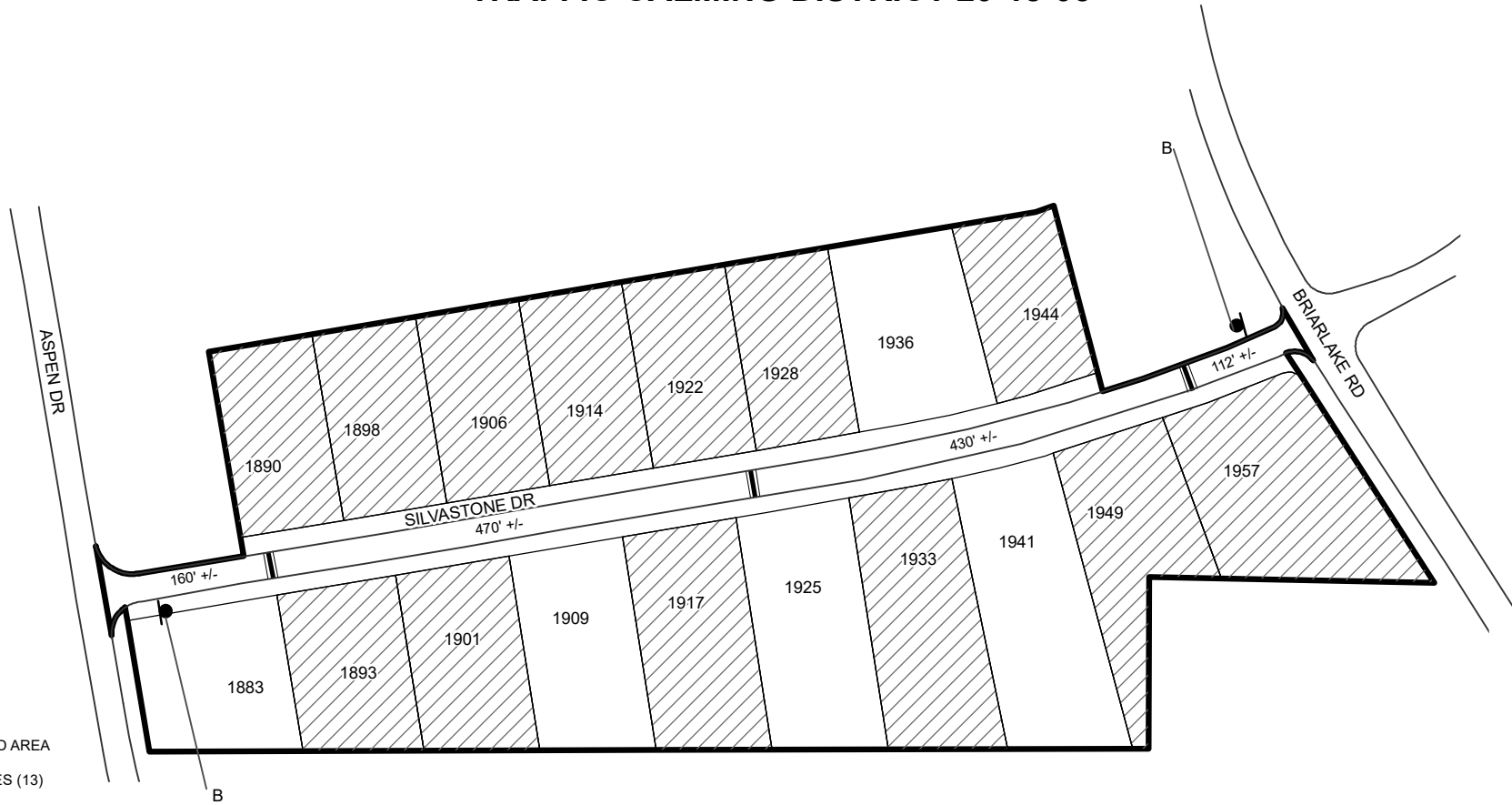

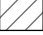

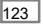

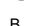




TRAFFIC CALMING DISTRICT 20-18-05

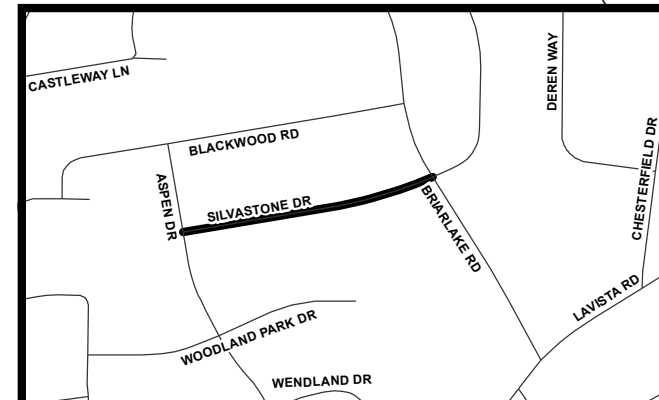


LEGEND

-  AFFECTED AREA
-  YES VOTES (13)
-  SPEED TABLES (3)
-  PARCEL BOUNDARY AND ADDRESS NUMBER
-  TRAFFIC CALMING DISTRICT SIGNS
-  SPEED HUMPS AHEAD SIGN AND ADVISORY 15 MPH SPEED PLAQUE
-  SPEED HUMPS AHEAD SIGN, CROSS STREET, AND ADVISORY 15 MPH SPEED PLAQUE
-  DISTANCE BETWEEN TRAFFIC CALMING MEASURES (CENTER TO CENTER) & DISTANCE BETWEEN TRAFFIC CALMING MEASURES AND END OF STREET

NOTES:

- 1) NUMBER OF PARCELS IN AFFECTED AREA: 18
- 2) STREET(S) IN AFFECTED AREA: SILVASTONE DR
- 3) EDGE OF TRAFFIC CALMING MEASURE NOT TO ENCROACH WITHIN 5' OF DRIVEWAY RETURNS



DEKALB COUNTY
TRANSPORTATION DIVISION
TRAFFIC CALMING SECTION

DRAWN BY: CH
REVIEWED BY: CH
REVIEWED BY: AE
REVIEWED BY:

SCALE: N.T.S.

Date: 2/25/2020

SILVASTONE DR

DIST: 18 TH LAND LOT: 192

COMMISSION DISTRICTS: 1 & 7