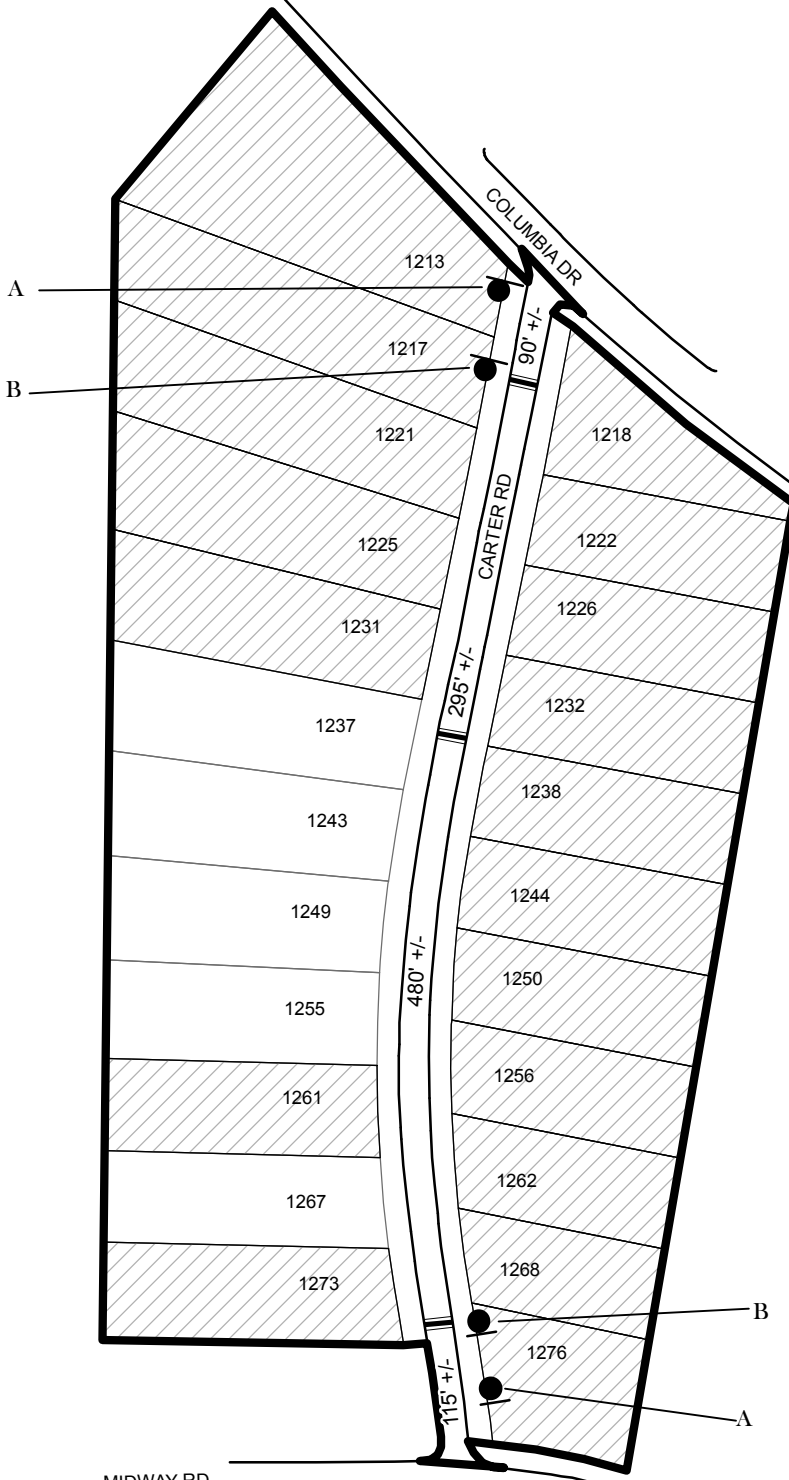
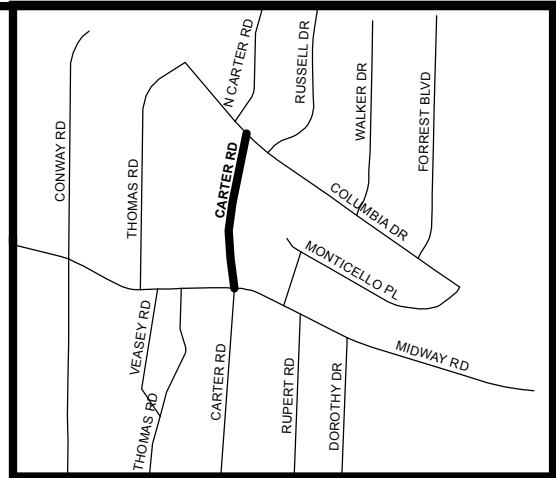


TRAFFIC CALMING DISTRICT 17-15-14



LEGEND

- AFFECTED AREA
- YES VOTES (18)
- SPEED TABLES (3)
- PARCEL BOUNDARY AND ADDRESS NUMBER
- TRAFFIC CALMING DISTRICT SIGNS
- SPEED HUMPS AHEAD SIGN AND ADVISORY 15 MPH SPEED PLAQUE
- SPEED HUMP AHEAD SIGN, CROSS STREET, AND ADVISORY 15 MPH SPEED PLAQUE
- 123 +/- DISTANCE BETWEEN TRAFFIC CALMING MEASURES (CENTER TO CENTER) & DISTANCE BETWEEN TRAFFIC CALMING MEASURES AND END OF STREET

NOTES:

- 1] NUMBER OF PARCELS IN AFFECTED AREA: 23
- 2] STREET(S) IN AFFECTED AREA: CARTER ROAD
- 3] EDGE OF TRAFFIC CALMING MEASURE NOT TO ENCROACH WITHIN 5' OF DRIVEWAY RETURNS

DEKALB COUNTY
TRANSPORTATION DIVISION
TRAFFIC CALMING SECTION

DRAWN BY: AE
REVIEWED BY: PGK
REVIEWED BY:
REVIEWED BY:

SCALE: NTS
Date: 12/12/2017

CARTER ROAD
DIST: 15 TH LAND LOT: 216
COMMISSION DISTRICTS: 3 & 6