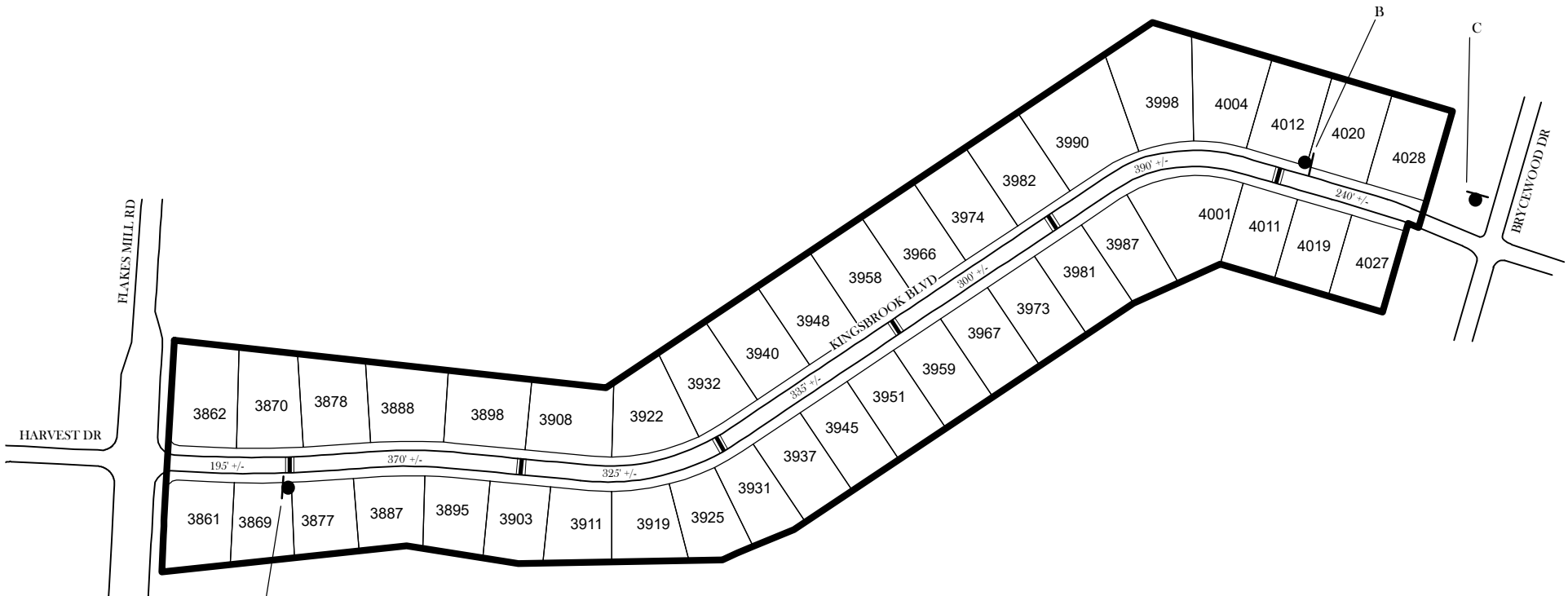


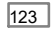

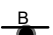



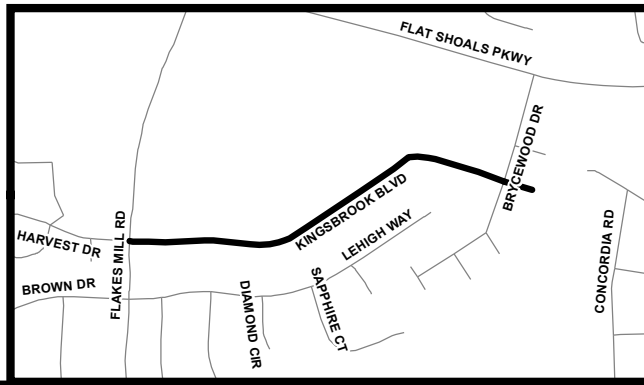
TRAFFIC CALMING DISTRICT 19-15-00



LEGEND

-  AFFECTED AREA
 -  SPEED TABLES (6)
 -  PARCEL BOUNDARY AND ADDRESS NUMBER
 -  A TRAFFIC CALMING DISTRICT SIGNS
 -  B SPEED HUMPS AHEAD SIGN AND ADVISORY 15 MPH SPEED PLAQUE
 -  C SPEED HUMP AHEAD SIGN, CROSS STREET, AND ADVISORY 15 MPH SPEED PLAQUE
- 123 +/- DISTANCE BETWEEN TRAFFIC CALMING MEASURES (CENTER TO CENTER) & DISTANCE BETWEEN TRAFFIC CALMING MEASURES AND END OF STREET

- NOTES:
- 1] NUMBER OF PARCELS IN AFFECTED AREA: 42
 - 2] STREET(S) IN AFFECTED AREA: KINGSBROOK BLVD
 - 3] EDGE OF TRAFFIC CALMING MEASURE NOT TO ENCROACH WITHIN 5' OF DRIVEWAY RETURNS



DEKALB COUNTY
TRANSPORTATION DIVISION
TRAFFIC CALMING SECTION

DRAWN BY: CH
 REVIEWED BY: CH
 REVIEWED BY:
 REVIEWED BY:

SCALE: N.T.S.
 Date: 11/12/2019

KINGSBROOK BLVD
 DIST: 15 TH LAND LOT: 61
 COMMISSION DISTRICTS: 3 & 7