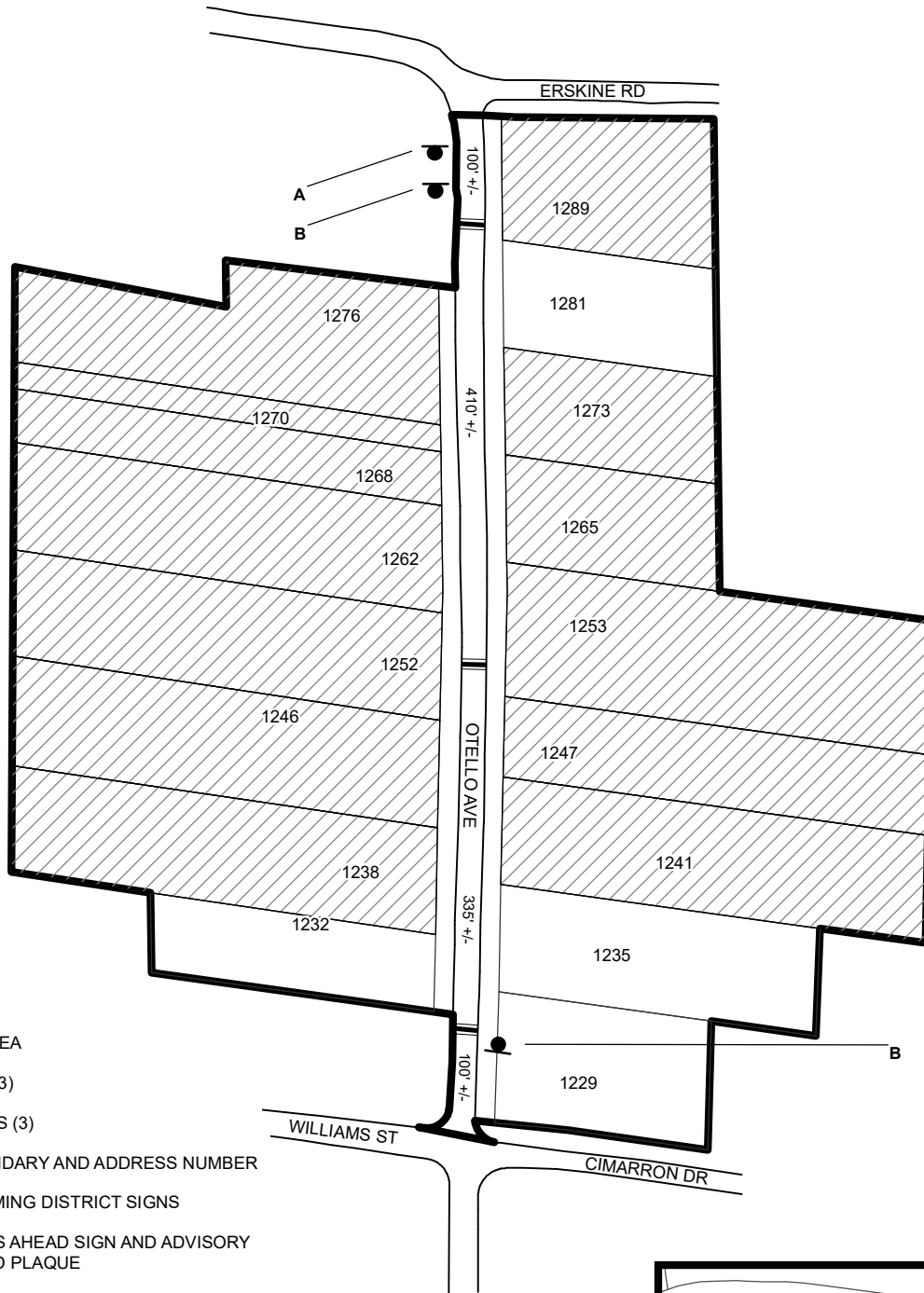



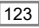

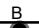



TRAFFIC CALMING DISTRICT 20-18-01

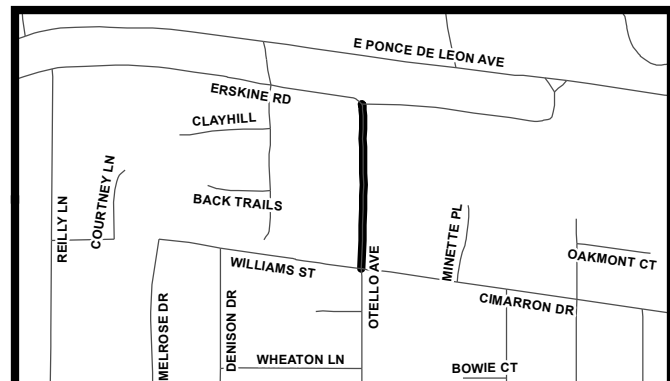


LEGEND

-  AFFECTED AREA
 -  YES VOTES (13)
 -  SPEED TABLES (3)
 -  PARCEL BOUNDARY AND ADDRESS NUMBER
 -  TRAFFIC CALMING DISTRICT SIGNS
 -  SPEED HUMPS AHEAD SIGN AND ADVISORY 15 MPH SPEED PLAQUE
 -  SPEED HUMP AHEAD SIGN, CROSS STREET, AND ADVISORY 15 MPH SPEED PLAQUE
- DISTANCE BETWEEN TRAFFIC CALMING MEASURES (CENTER TO CENTER) & DISTANCE BETWEEN TRAFFIC CALMING MEASURES AND END OF STREET
123 +/-

NOTES:

- 1) NUMBER OF PARCELS IN AFFECTED AREA: 17
- 2) STREET(S) IN AFFECTED AREA: OTELLO AVE
- 3) EDGE OF TRAFFIC CALMING MEASURE NOT TO ENCROACH WITHIN 5' OF DRIVEWAY RETURNS



DEKALB COUNTY
TRANSPORTATION DIVISION
TRAFFIC CALMING SECTION

DRAWN BY: CH
REVIEWED BY: CH
REVIEWED BY: AE
REVIEWED BY:

SCALE: N.T.S.

Date: 2/11/2020

OTELLO AVE

DIST: 18 TH LAND LOT: 120

COMMISSION DISTRICTS: 4 & 6