



**STATE OF GEORGIA PLAT ACT CERTIFICATION**

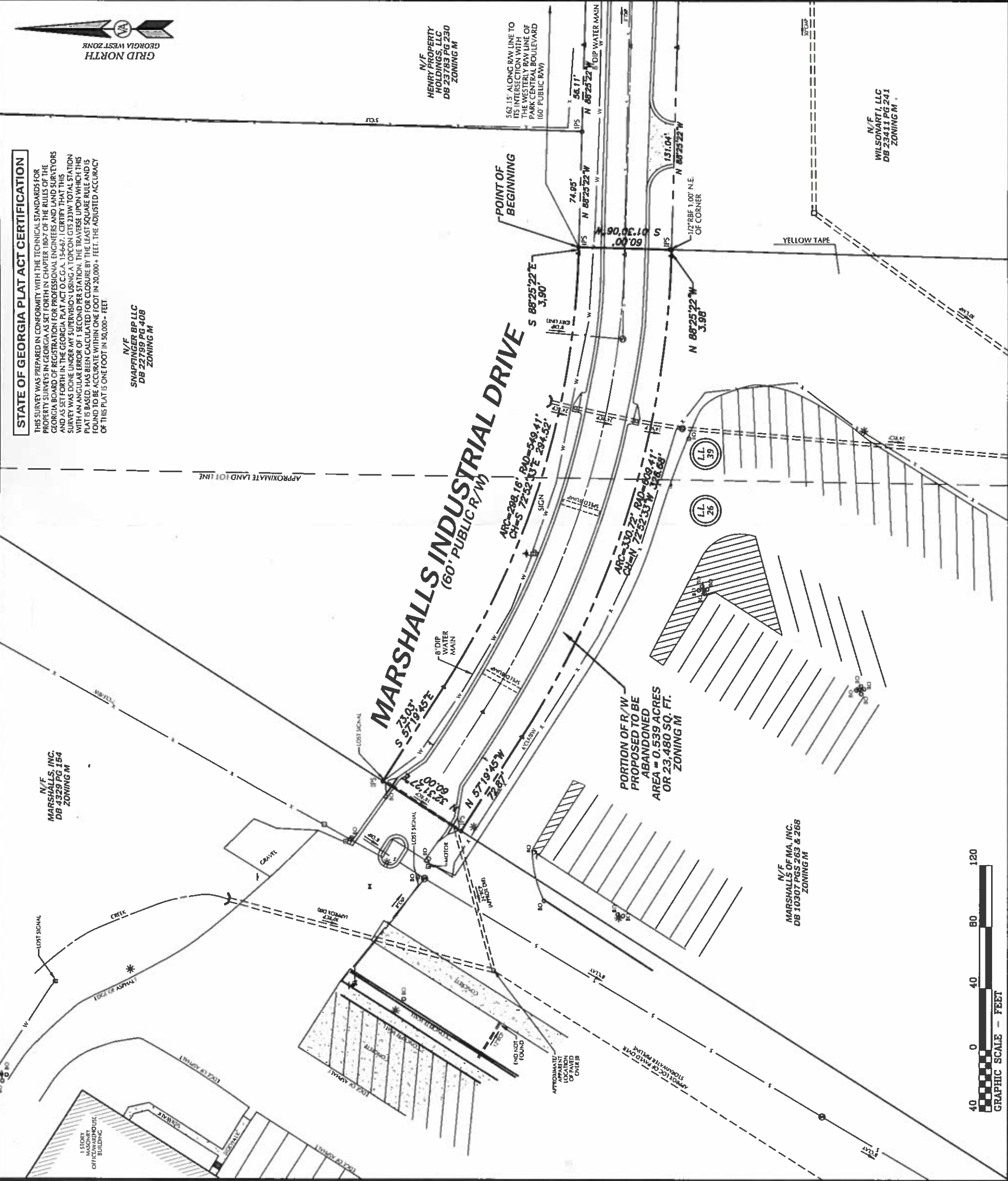
THIS SURVEY WAS PREPARED IN CONFORMITY WITH THE TECHNICAL STANDARDS FOR PROFESSIONAL SURVEYING AS SET FORTH IN CHAPTER 1807 OF THE RULES OF THE GEORGIA BOARD OF PROFESSIONAL ENGINEERS AND LAND SURVEYORS AND AS SET FORTH IN THE GEORGIA PLAT ACT (O.C.G.A. § 15-6-62). CERTIFY THAT THIS SURVEY WAS DONE UNDER MY SUPERVISION USING A TOPCON GTS-233W TOTAL STATION WITH AN ANGULAR ERROR OF 1 SECOND PER STATION. THE TRAVERSE UPON WHICH THIS PLAT IS BASED HAS BEEN CALCULATED FOR CLOSURE BY THE LEAST SQUARE RULE AND IS FOUND TO BE ACCURATE WITHIN ONE FOOT IN 20,000+ FEET. THE ADJUSTED ACCURACY OF THIS PLAT IS ONE FOOT IN 30,000+ FEET.

N/F  
SNAPFINGER BP LLC  
DB 22759 PG 408  
ZONING M

N/F  
HENRY PROPERTY HOLDINGS, LLC  
DB 23783 PG 230  
ZONING M

562.15' ALONG R/W LINE TO ITS INTERSECTION WITH THE WESTERLY R/W LINE OF PARK CENTRAL BOULEVARD (60' PUBLIC R/W)

N/F  
WILSONWART, LLC  
DB 23411 PG 241  
ZONING M



N/F  
MARSHALLS OF MA, INC.  
DB 10307 PGS 263 & 268  
ZONING M

