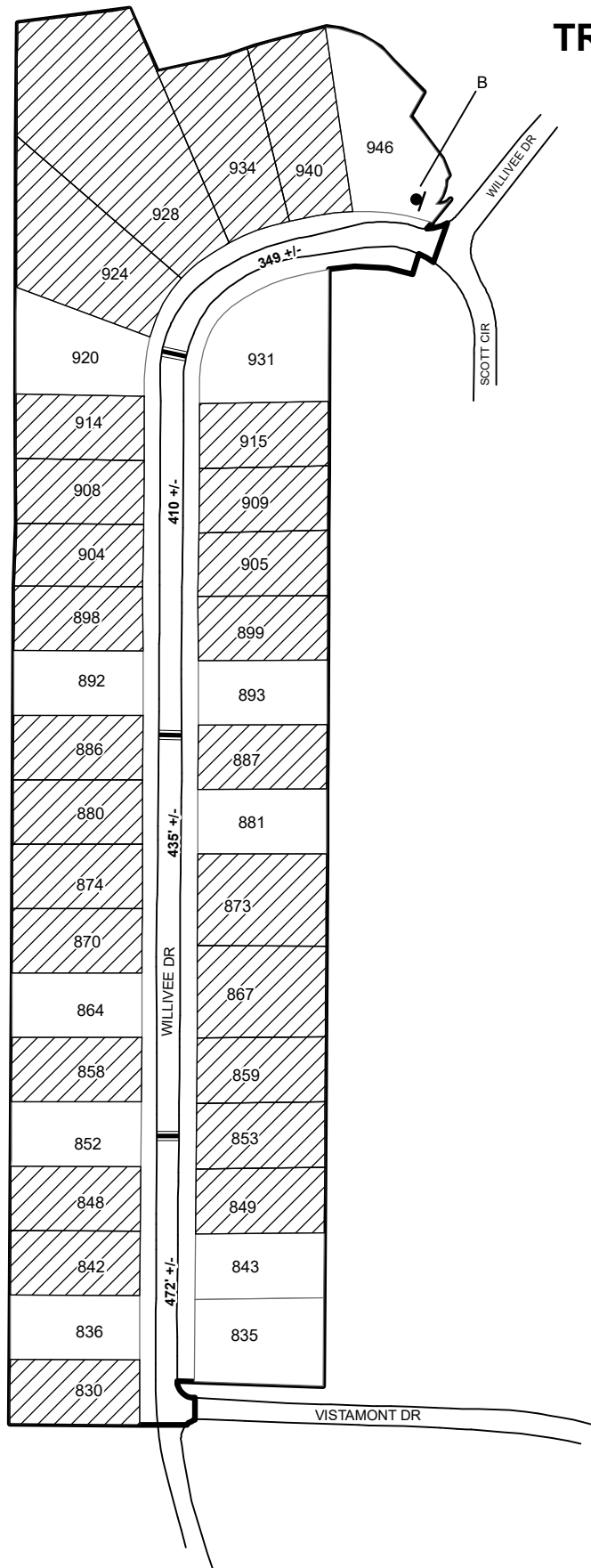

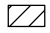

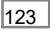
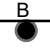


TRAFFIC CALMING DISTRICT 18-18-05

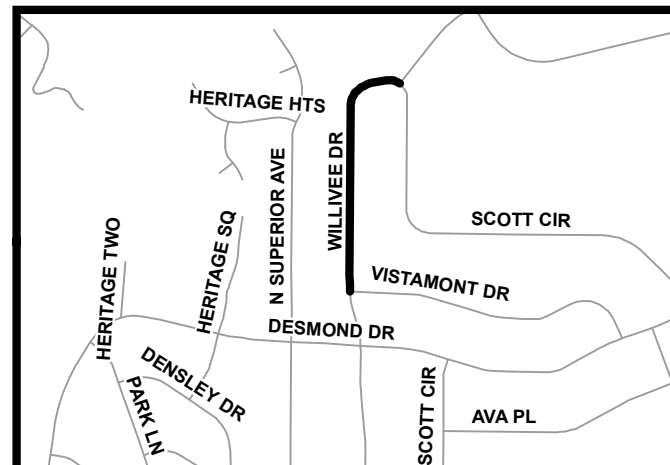


LEGEND

-  AFFECTED AREA
-  YES VOTES (26)
-  SPEED TABLES (3)
-  PARCEL BOUNDARY AND ADDRESS NUMBER
-  SPEED HUMPS AHEAD SIGN AND ADVISORY 15 MPH SPEED PLAQUE
- 123 +/- DISTANCE BETWEEN TRAFFIC CALMING MEASURES (CENTER TO CENTER) & DISTANCE BETWEEN TRAFFIC CALMING MEASURES AND END OF STREET

NOTES:

- 1] NUMBER OF PARCELS IN AFFECTED AREA: 37
- 2] STREET(S) IN AFFECTED AREA: WILLIVEE DR
- 3] EDGE OF TRAFFIC CALMING MEASURE NOT TO ENCR OACH WITHIN 5' OF DRIVEWAY RETURNS



DEKALB COUNTY
TRANSPORTATION DIVISION
TRAFFIC CALMING SECTION

DRAWN BY: CH
REVIEWED BY: CH
REVIEWED BY: AE
REVIEWED BY: PGK

SCALE: NTS

Date: 8/28/2018

WILLIVEE DR

DIST: 18TH LAND LOT: 61 & 102

COMMISSION DISTRICTS: 2 & 6