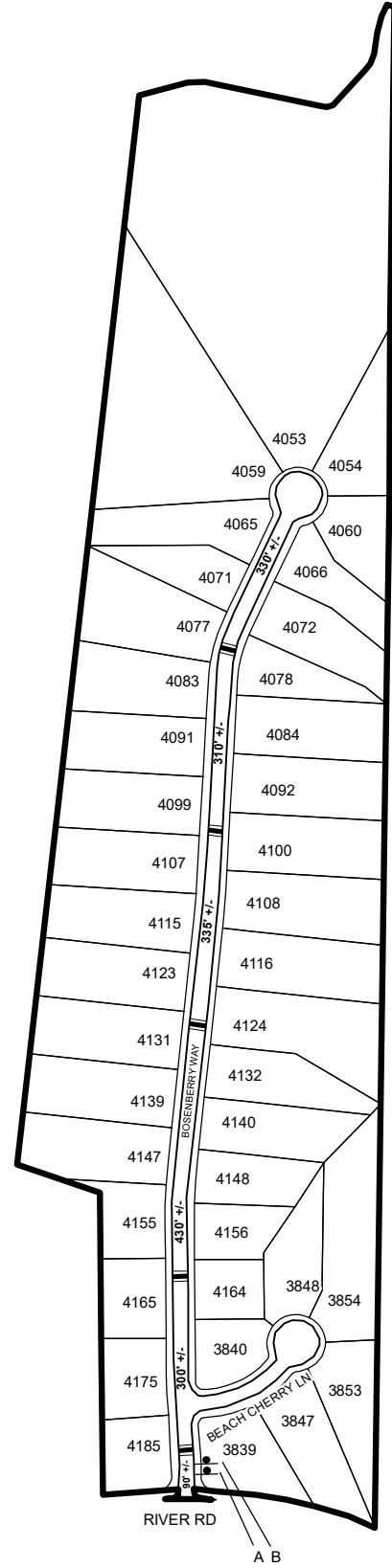




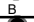


# TRAFFIC CALMING DISTRICT 19-15-00

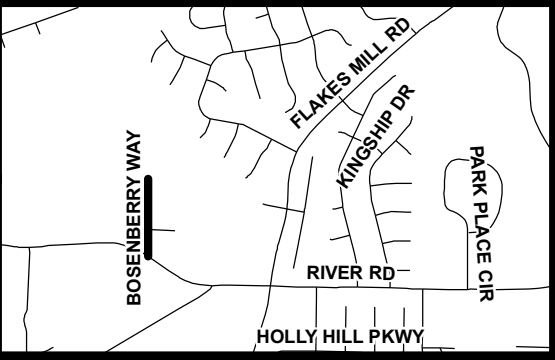


### LEGEND

-  AFFECTED AREA
-  SPEED TABLES (5)
-  123 PARCEL BOUNDARY AND ADDRESS NUMBER
-  A TRAFFIC CALMING DISTRICT SIGNS
-  B SPEED HUMPS AHEAD SIGN AND ADVISORY 15 MPH SPEED PLAQUE
- 123 +/- DISTANCE BETWEEN TRAFFIC CALMING MEASURES (CENTER TO CENTER) & DISTANCE BETWEEN TRAFFIC CALMING MEASURES AND END OF STREET

### NOTES:

- 1] NUMBER OF PARCELS IN AFFECTED AREA: 40
- 2] STREET(S) IN AFFECTED AREA: BOSENBERRY WAY, BEACH CHERRY LANE
- 3] EDGE OF TRAFFIC CALMING MEASURE NOT TO ENCROACH WITHIN 5' OF DRIVEWAY RETURNS



DEKALB COUNTY TRANSPORTATION DIVISION TRAFFIC CALMING SECTION	DRAWN BY: CH	SCALE: N.T.S.	BOSENBERRY WAY DIST: 15 TH LAND LOT: 28 COMMISSION DISTRICTS: 3 & 7
	REVIEWED BY: CH		
	REVIEWED BY: AE	Date: 2/12/2019	
	REVIEWED BY: PGK		