

PROPERTY AND EXISTING R/W LINE
 REQUIRED R/W LINE
 CONSTRUCTION LIMITS
 EASEMENT FOR CONSTR
 & MAINTENANCE OF SLOPES
 EASEMENT FOR CONSTR OF SLOPES
 EASEMENT FOR CONSTR OF DRIVES

BEGIN LIMIT OF ACCESS.....BLA
 END LIMIT OF ACCESS.....ELA
 LIMIT OF ACCESS
 REQ'D R/W & LIMIT OF ACCESS

AECOM
 1360 PEACHTREE ST
 SUITE 500
 ATLANTA, GEORGIA 30309
 TEL: (404) 945-9600

DATE	REVISIONS	DATE	REVISIONS
05/27/11	PAR 4 REV RECD RW		
11/27/12	PAR 12 REV RECD RW		
09/25/14	REV PROP LINES, PAR 4 REV RECD RW		
03/10/20	REV PAR 4 RECD RW		

STATE OF GEORGIA
 DEPARTMENT OF TRANSPORTATION
RIGHT OF WAY MAP
 PROJECT NO.: STP00-0002-0016691
 COUNTY: DEKALB
 LAND LOT NO.: 246
 LAND DISTRICT: 15
 GMD: 531
 DATE: 10/05/07 SH 12 OF 57

DECATUR HISTORIC DISTRICT
 (ENCOMPASSES ENTIRE SHEET VIEW)

DEKALB COUNTY
 TRACT 2
 SEE SHEET 10

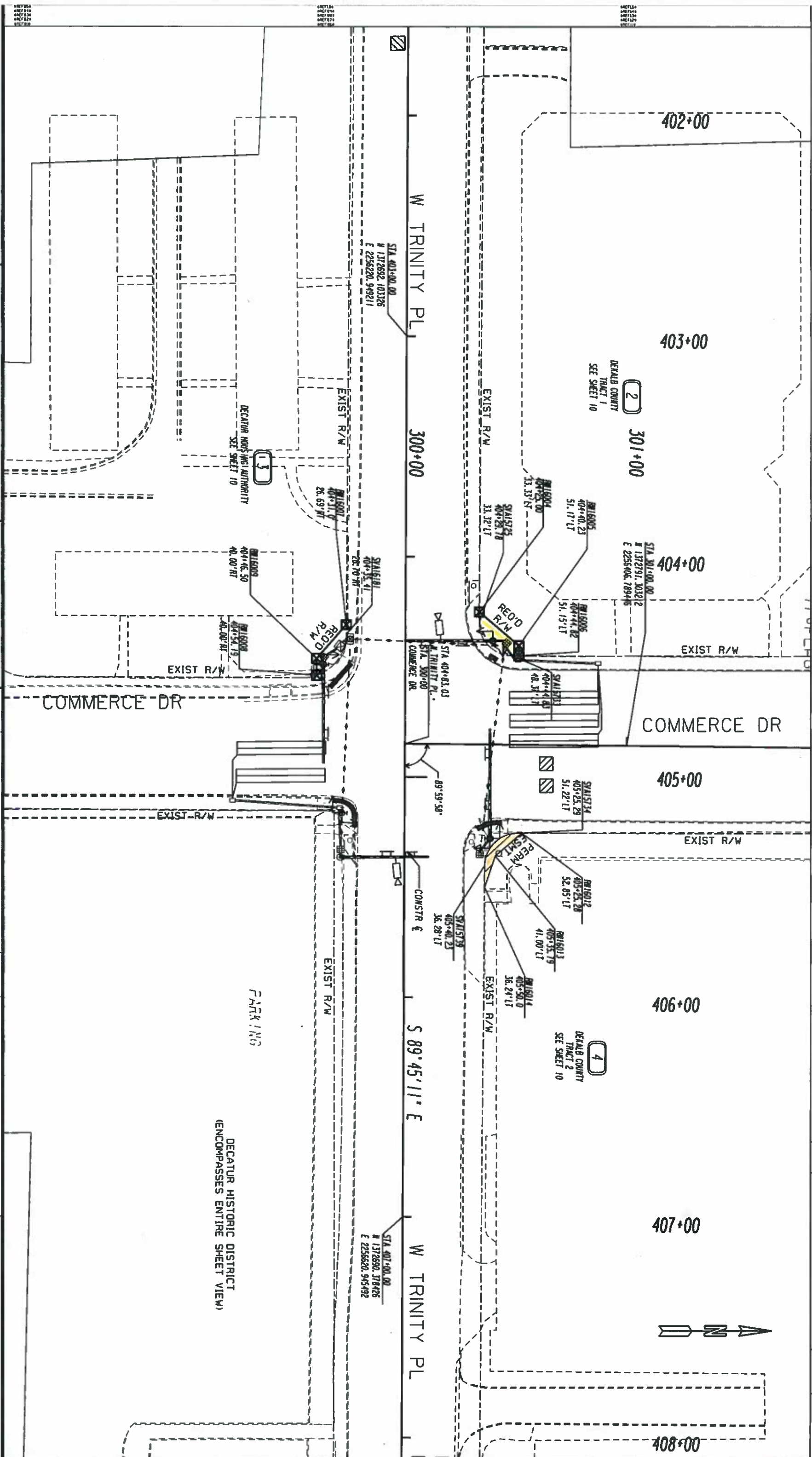
DEKALB COUNTY
 TRACT 1
 SEE SHEET 10

DECATUR COMMONS CONDOS
 ASSOCIATION, INC.
 SEE SHEET 14

DO NOT DISTURB
 WALL

N 0°27'48" E





PROPERTY AND EXISTING R/W LINE
 CONSTRUCTED R/W LINE
 CONSTRUCTION LIMITS
 EASEMENT FOR CONSTR
 & MAINTENANCE OF SLOPES
 EASEMENT FOR CONSTR OF SLOPES
 EASEMENT FOR CONSTR OF DRIVES

BEGIN LIMIT OF ACCESS.....BLA
 END LIMIT OF ACCESS.....ELA
 REVD R/W & LIMIT OF ACCESS

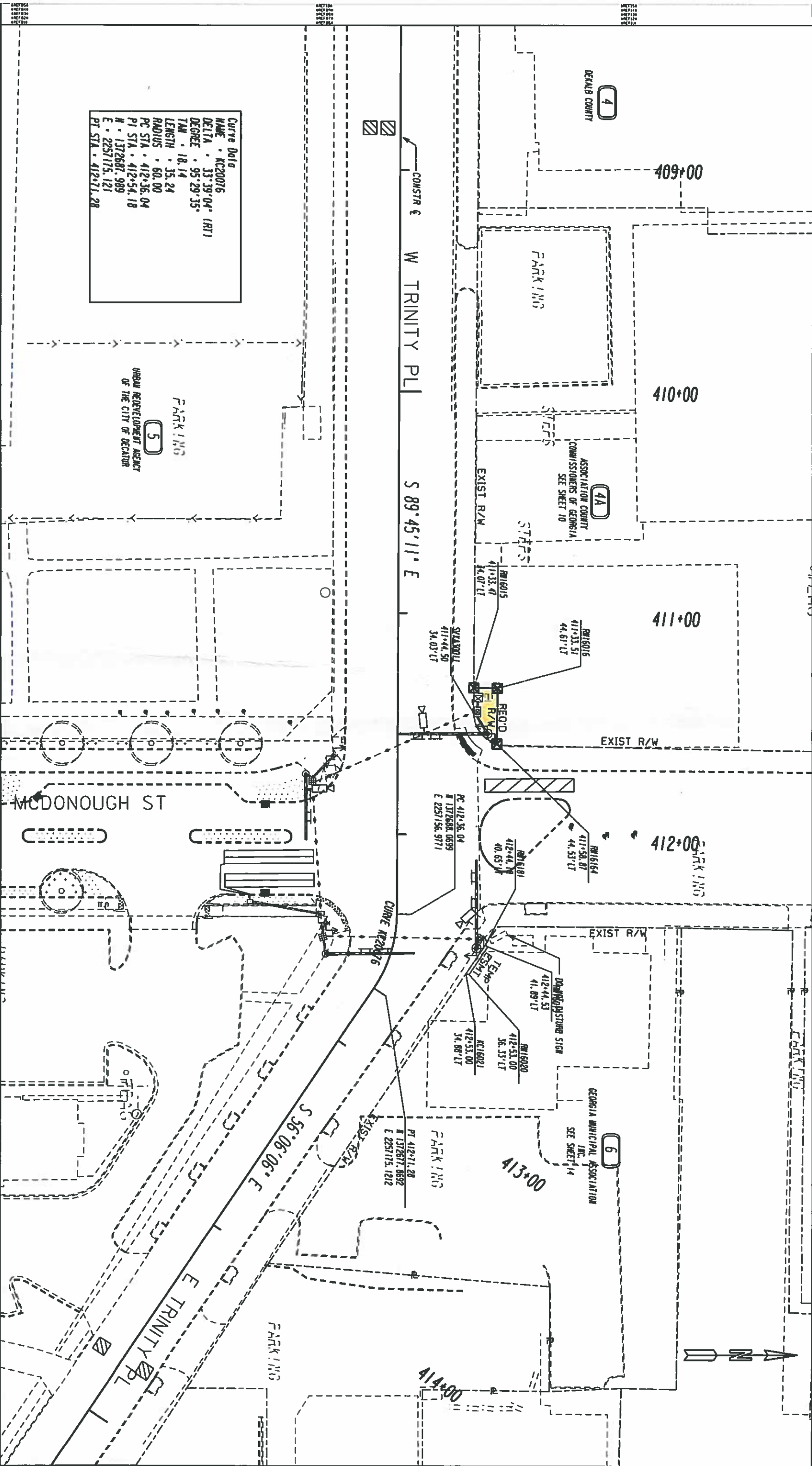
SCALE IN FEET
 0 20 40 80

AECOM
 360 PEACHTREE ST
 SUITE 500
 ATLANTA, GEORGIA 30309
 TEL: (404) 945-9600

DATE	REVISIONS	DATE	REVISIONS
09/25/14	REV PROP LINES, PAR 5 REV OWNER NAME & REVD R/W		
03/10/20	REV PAR 4, REVD PAR 5		

STATE OF GEORGIA
 DEPARTMENT OF TRANSPORTATION
 RIGHT OF WAY MAP

PROJECT NO.: STP00-0002-001(689)
 COUNTY: DEKALB
 LAND LOT NO.: 246
 LAND DISTRICT: 15
 GMD: 531
 DATE: 10/05/07 SH 8 OF 57



Curve Data
 NAME: KC20076
 DELTA: 33°39'04" (RT)
 DEGREE: 95°29'35"
 TAN: 18.14
 LENGTH: 35.24
 RADIUS: 60.00
 PC STA: 412+36.04
 PI STA: 412+54.18
 P2 STA: 412+687.989
 E: 2257175.121
 PT STA: 412+71.28

PROPERTY AND EXISTING R/W LINE
 REQUIRED R/W LINE
 CONSTRUCTION LIMITS
 EASEMENT FOR CONSTR
 & MAINTENANCE OF SLOPES
 EASEMENT FOR CONSTR OF SLOPES
 EASEMENT FOR CONSTR OF DRIVES

BEGIN LIMIT OF ACCESS.....BLA
 END LIMIT OF ACCESS.....EIA
 LIMIT OF ACCESS.....EIA
 REQ'D R/W & LIMIT OF ACCESS

SCALE IN FEET
 0 20 40 80

AECOM
 1360 PEACHTREE ST
 SUITE 500
 ATLANTA, GEORGIA 30309
 TEL: (404) 945-9600

DATE	REVISIONS	DATE	REVISIONS
05/27/11	PAR 4 & 7 REV RECORD R/W		
07/25/13	PAR 5 & 7 REV RECORD R/W		
09/25/14	REV PROP LINES, PAR 4 REV RECORD R/W, ADD PAR 4A		
04/29/19	PAR 4A REV RECORD R/W, PAR 6 REV CSMT		

STATE OF GEORGIA
 DEPARTMENT OF TRANSPORTATION
 RIGHT OF WAY MAP
 PROJECT NO: STPO-002-001691
 COUNTY: DEKALB
 LAND LOT NO: 246
 LAND DISTRICT: 15
 GND: 531
 DATE: 10/05/07 SH 9 OF 57

2

DEKALB COUNTY
SEE SHEETS 8, 12

PARCEL 2 TRACT 1 REOD R/W RM16002

PNT	OFFSET/DIST	STATION/BEARING	ALIGNMENT
RM16004	33.33 L	404+23.00	W TRINITY PLACE
	23.45	N 40°43'48" E	
RM16005	51.17 L	404+40.23	W TRINITY PLACE
	4.60	S 09°32'12" E	
RM16006	51.15 L	404+44.82	W TRINITY PLACE
	2.78	S 0°01'50" W	
STA15733	48.37 L	404+44.83	W TRINITY PLACE
ARC LENGTH = 23.670			
CHORD BEAR = S 45°14'00" W			
LATH CHORD = 21.290			
RADIUS = 15.082			
DEGREE = 301° 55' 6"			
STA15725	11.32 L	404+23.78	W TRINITY PLACE
	4.78	N 89°33'50" W	
RM16004	33.33 L	404+23.00	W TRINITY PLACE
	169.88	SF	
	REOD R/W = 0.004 ACRES		

3

DECATUR HOUSING AUTHORITY
SEE SHEET 8

PARCEL 3 REOD R/W RM16003

PNT	OFFSET/DIST	STATION/BEARING	ALIGNMENT
RM16007	26.69 R	404+31.00	W TRINITY PLACE
	4.41	S 89°34'00" E	
STA15181	26.70 R	404+35.41	W TRINITY PLACE
	24.517	ARC LENGTH = 24.517	
	5.54	CHORD BEAR = S 54°26'54" E	
	21.011	LATH CHORD = 21.011	
	20.000	RADIUS = 20.000	
	286° 28' 44"	DEGREE = 286° 28' 44"	
RM16008	40.00 R	404+54.19	W TRINITY PLACE
	7.69	N 89°45'11" W	
RM16009	40.00 R	404+46.50	W TRINITY PLACE
	20.43	N 49°05'39" W	
RM16007	26.69 R	404+31.00	W TRINITY PLACE
	137.34	SF	
	REOD R/W = 0.003 ACRES		
	REMAINDER = +/- 7.319 ACRES		

4

DEKALB COUNTY
SEE SHEETS 8, 12

PARCEL 4 TRACT 1 REOD R/W RM16106

PNT	OFFSET/DIST	STATION/BEARING	ALIGNMENT
STA15004	37.92 R	303+26.39	COMMERCE DRIVE
	15.41	ARC LENGTH = 15.41	
	40°36'55" E	CHORD BEAR = N 40°36'55" E	
	32.54	LATH CHORD = 32.54	
	25.000	RADIUS = 25.000	
	229° 10' 59"	DEGREE = 229° 10' 59"	
RM16036	54.89 R	303+51.25	COMMERCE DRIVE
	11.89	S 0°02'59" W	
RM16063	54.96 R	303+35.36	COMMERCE DRIVE
	9.62	S 09°46'38" W	
RM16064	40.36 R	303+38.24	COMMERCE DRIVE
	16.34	S 1°05'19" E	
RM16065	49.81 R	303+22.91	COMMERCE DRIVE
	11.86	N 89°54'52" W	
RM16037	37.95 R	303+22.82	COMMERCE DRIVE
	1.57	N 0°01'09" E	
STA15004	37.92 R	303+26.39	COMMERCE DRIVE
	315.99	SF	
	REOD R/W = 0.007 ACRES		
	REMAINDER = +/- 2.8 ACRES		

4A

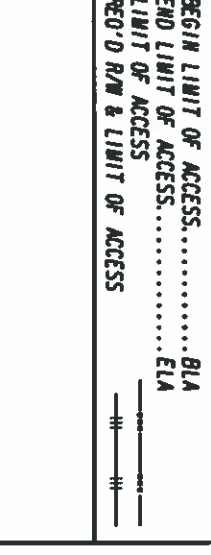
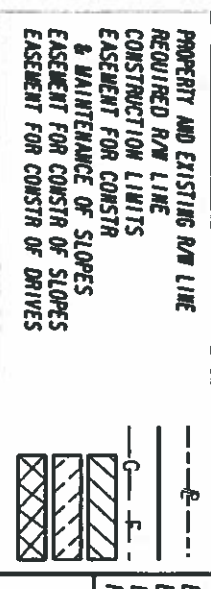
ASSOCIATION COUNTY
COMMISSIONERS OF GEORGIA
SEE SHEET 9

PARCEL 4A REOD R/W RM1006

PNT	OFFSET/DIST	STATION/BEARING	ALIGNMENT
RM16015	34.07 L	411+33.47	W TRINITY PL
	10.54	N 0°27'46" E	
RM16016	44.61 L	411+33.51	W TRINITY PL
	25.36	S 09°34'01" E	
RM16164	44.53 L	411+56.87	W TRINITY PL
	19.048	ARC LENGTH = 19.048	
	5.54	CHORD BEAR = S 54°05'31" W	
	17.794	LATH CHORD = 17.794	
	13.000	RADIUS = 13.000	
	307° 50' 18"	DEGREE = 307° 50' 18"	
STA150011	34.03 L	411+44.50	W TRINITY PL
	11.03	N 89°32'07" W	
RM16015	34.07 L	411+33.47	W TRINITY PL
	227.26	SF	
	REOD R/W = 0.005 ACRES		
	REMAINDER = +/- 1.1 ACRES		

PARCEL 4 TRACT 2 REOD EASMT. RM1004

PNT	OFFSET/DIST	STATION/BEARING	ALIGNMENT
RM16012	52.85 L	405+25.20	W TRINITY PLACE
	15.84	S 41°19'25" E	
RM16013	41.00 L	405+35.79	W TRINITY PLACE
	14.99	S 71°14'04" E	
RM16014	36.24 L	405+50.00	W TRINITY PLACE
	9.77	N 89°32'27" W	
STA15179	36.28 L	405+40.23	W TRINITY PLACE
	23.447	ARC LENGTH = 23.447	
	44°45'40" W	CHORD BEAR = N 44°45'40" W	
	21.131	LATH CHORD = 21.131	
	15.000	RADIUS = 15.000	
	301° 58' 20"	DEGREE = 301° 58' 20"	
STA15134	51.22 L	405+25.29	W TRINITY PLACE
	1.63	N 0°01'08" E	
RM16012	52.85 L	405+25.20	W TRINITY PLACE
	97.01	SF	
	REOD EASMT = 0.002 ACRES		



AECOM

1360 PEACHTREE ST
SUITE 500
ATLANTA, GEORGIA 30309
TEL: (404) 945-9600

DATE	REVISIONS	DATE	REVISIONS
05/27/11	PAR 1 & 4 REV REOD R/W	11/19/19	PAR 1 REV REOD R/W
07/25/13	PAR 5 REV REOD R/W	03/10/20	REMOVED PAR 5, REV PAR 4 TRACTS 1 & 2
09/25/14	PAR 2 REV REOD R/W, ADD PAR 4A, PAR 5 REV		
	OWNER NAME & REOD R/W		
04/17/17	REV LABELS PAR 2 & 4		
04/29/19	PAR 4A REV REOD R/W		

STATE OF GEORGIA
DEPARTMENT OF TRANSPORTATION
RIGHT OF WAY MAP

PROJECT NO: STP00-0002-0016591
 COUNTY: DEKALB
 LAND LOT NO: 245, 246
 LAND DISTRICT: 15
 GWD: 531
 DATE: 10/05/07 SH 10 OF 57