



PROFESSIONAL SERVICES AGREEMENT

Project Name: Emory South Fork Peachtree Creek Trail Scoping Study

Client: DeKalb County Transportation Division
1950 West Exchange Place, Room 400
Tucker, GA 30084
Contact: David W. Pelton, P.E.

Consultant: PATH Foundation
1601 W. Peachtree Street
Atlanta, Georgia 30309
Contact: Greta deMayo, Executive Director

Date: November 16, 2022

Thank you for the opportunity to submit the following proposal for the *Emory South Fork Peachtree Creek Trail Scoping Study*. During the study, the following scope of work will be completed by the PATH Foundation, Inc. (PATH) within 10 months. The approximately 3.5-mile trail study area is conveyed in the below map, the red line is representing the study corridor.



SCOPE OF BASIC SERVICES:

DeKalb County will be responsible for the following within this scope of services:

- Coordination with property owners for permission to access the project's corridor for surveying, environmental delineations, and all site walks.
- Project management to facilitate all acquisition required for the project. Including all acquisition costs, legal, and closing fees.

TASK 1: DATA COLLECTION, COMMITTEE FORMATION & FIELDWORK

Upon Notice to Proceed, PATH will generate a base map for use during fieldwork and analysis of existing conditions. Tasks include:

- Collection of county GIS map files (including property ownership), aerial photography, public maintained utilities (including DeKalb County sewer easements), and topographic data;
- Collection of existing and proposed trail alignment data;
- Review of all materials and organization of base information for analysis;
- Prepare fieldwork base map using all data obtained.

Kick-Off Meeting: PATH will hold a project kick-off meeting with the project Working Group, including DeKalb County (DWM, RPCA, Transportation, District Commissioner, etc.), South Fork Conservancy, and Emory University. During the kick-off meeting, PATH will discuss project scope, objectives, opportunities and potential challenges, and project meetings, stakeholder engagement, public engagement, and deliverable schedule. The study will include a trip generation analysis to forecast the estimated trail usership baseline and growth.

Upon completion of one (1) 24x36 fieldwork base map of the study area and the kickoff meeting, PATH will begin assessment of existing conditions to verify all trail connectivity opportunities within the study corridor. PATH will conduct initial fieldwork along with review of GIS topographic data to prepare conceptual plans of the proposed alignment options.

Deliverables include:

- One (1) 24x26 fieldwork base map;
- Digital PowerPoint presentation of the kick-off meeting and next steps;
- Conduct trip generation baseline and growth estimate.

During the collection of initial data, PATH will review all previous planning documents and identify a Technical Committee for review of regional significance during the scoping study process. The Technical Committee will include state and regional agencies such as MARTA, ARC, and GDOT. PATH will engage each member throughout the study, as needed, and collect all documents of regional multi-modal importance associated with the study area.

TASK 2: DRAFT TRAIL SCOPING STUDY

Working Group Meeting #1: Upon completion of the initial field work, the preliminary findings will be presented to the Working Group for review and obtain feedback during the Working Group meeting #1.

Following the meeting, PATH will conduct additional field work to determine the best opportunities for trail connections within the study corridor.

PATH will engage the Working Group to recommend all organizations for PATH to have one-on-one engagement that have multi modal interests in the study area and on Emory's campus. PATH will identify who will use the trail corridor and the impact the proposed trail will have on the community.

In the initial assessment of the corridor, PATH will outline methods for preserving the natural integrity of the South Fork Peachtree Creek corridor. PATH will work with DWM to assess the existing DeKalb County sewer easement for feasibility of the trail's alignment with the understanding the corridor is already disturbed and must remain cleared and proposing a trail within the corridor would offer improvement of the corridor and bring positive awareness to the impacted creek.

Tasks include:

- Assess existing/planned routes to identify origins, destinations, opportunities, and challenges;
- Photograph documentation of potential trail connection opportunities;
- Prepare one (1) conceptual trail base map showing all trail route options identified during field work;
- Develop up to five (5) visioning graphics to illustrate proposed connectivity opportunities, including before/after photo renderings, cross-section drawings, etc.;
- Attend one (1) virtual meeting with the Working Group to review preliminary findings and collect feedback
- Attend one (1) virtual meeting with the User Group to review preliminary findings and collect feedback as needed
- PATH/DeKalb County (DWM, RPCA, Transportation, District Commissioner, etc.) team meeting – unlimited number of electronic messaging (i.e. web conference/ conference call)

Deliverables will include:

- Digital PowerPoint presentation of the draft trail scoping study, including existing conditions, planned conditions, and preliminary trail connectivity mapping;
- Meeting summary email with 'next steps' listed for working group feedback and comment.
- One (1) digital (.pdf) 24x36 overall conceptual trail connectivity plan;
- Five (5) digital visioning graphics (.pdf) to be used for presentation to garner public support and assist in fundraising;
- Digital files of all deliverables and relevant back-up files (.pdf/.tiff/.jpeg)

User Groups Involvement: PATH team will assist DeKalb County to engage a broader constituent group in the study area, including other user groups such as CDC, Propel ATL, ARC, City of Atlanta, SFPC Alliance, etc. PATH will prepare review packet including supporting graphics from task 3 and 5 for digital distribution to the User Groups. All materials will be shared through an online platform such as Procore to allow recipients leaving feedback and markups on the plans.

The first engagement will focus on sharing the preliminary findings of the feasibility study and gather input on existing conditions. The second involvement opportunity will focus on presentation of the 30% design development for the trail alignment identified.

Deliverables will include:

- Digital review packet on of each outreach involvement opportunity
- Meeting summary email with 'next steps' listed for user group feedback and comment.

TASK 3: FINAL TRAIL SCOPING STUDY

Working Group Meeting #2: All information obtaining during the Working Group Meeting #1, the Technical Committee and stakeholder meetings, the user group meeting, along with additional field verification will be used to create a compiled PowerPoint document for *Emory South Fork Peachtree Creek Trail Scoping Study*. The compiled document will be presented at the second working group meeting and will include a case study for sustainability in response to climate change. The study will outline the environmental importance of the trail associated with non-motorized mobility, public awareness, and proposed design and construction methods.

PATH will incorporate revisions and work directly with the working group to outline an implementation strategy for phasing the proposed trail connections. PATH will outline the implementation costs for each phase of trail. The final trail scoping study document will be packaged and circulated to the working group.

Tasks/Meetings:

- Attend one (1) virtual meeting with the working group to review the Draft trail plan and collect feedback;
- Conduct additional fieldwork and revise preliminary findings;
- Create up to two (2) additional visioning graphics;
- Create mapping exhibits with subject parcel information;
- Prepare phasing plan and cost estimate;
- Incorporate feedback and revisions, prepare the final trail study document;
- Attend one (1) meeting to present Draft trail plan to neighborhood interest group and collect feedback.

Deliverables will include:

- Digital PowerPoint presentation of the Draft trail scoping study;
- Meeting summary email with 'next steps' listed for working group feedback and comment.
- Digital files of all deliverables and relevant back-up files (.pdf/.tiff/.jpeg)
- ArcGIS shapefile and Google Earth (.kmz) files of the final trail connections.

TASK 4 SURVEY SERVICES

Upon acceptance of the Final Trail Scoping Study, the project surveyor will conduct a topographic survey of each of the identified phases within the Final Study. The surveying services will be performed by PATH to meet the standards for surveying trail corridors including:

- property lines and rights-of-way will be shown per municipal GIS data
- streets, sidewalks, and intersections
- topography (2' contours)
- trees (species and caliper per DeKalb County requirements)
- private utility locates including above ground utilities and underground utilities
- sanitary/storm sewers
- manholes/catch basins/drop inlets/curb inlets
- existing cut-ins for driveways
- buildings including accessory buildings, small structures
- retaining walls, privacy and security fences.
- creek wrested vegetation limit at proposed bridge crossing
- FEMA floodplain
- 25' state stream buffer / 75' DeKalb County stream buffer
- all site elements

DeKalb County will be responsible to provide access to properties (notification via letters, notices etc.). Centerline staking is not anticipated nor included.

Task 4 Deliverables:

- AutoCAD/Civil 3D File (or tin file)
- Stamped survey file in pdf format

TASK 5: 30% DESIGN DEVELOPMENT

Utilizing the survey file, the PATH Design Team agrees to prepare Design Development Construction Documents for the work as defined within this proposal. PATH will create design development drawings including proposed alignment for off-street trails, rough grading, length and location of structure and bridge, and amenity areas.

PATH shall prepare 30% Design Development Documents as described below:

- Cover Sheet
- 30% Alignment Construction Plans & Rough Grading
- Length and location of proposed structure
- 30% Construction Details
- Conceptual Design Plan View and Section Graphics
- 30% Cost Estimate*

**To give flexibility for identifying funding for construction, PATH will outline each cost estimate in phases as outlined and agreed by the Final Trail Scoping Study. This phasing plan will allow for potential phasing of construction if necessary, based on potential construction funding.*

Working Group Meeting #3 & #4: PATH will hold a design review meeting followed by a site meeting with the Working Group to collect feedback on the design development document. PATH anticipate the field-run survey to be complete by the identified phases, i.e. PATH team will begin design development for the 1st phase once survey complete. PATH anticipate to present progress drawings at the Working

Group Meeting #3 while waiting for the reminder survey and will present a complete draft concept plans during the Working Group Meeting #4.

All feedback obtained from the Working Group Meeting #3 and User Groups will be incorporated to a final 30% Design Document. The PATH Design Team will update the cost estimate when the final drawings are complete.

Tasks/Meetings:

- Attend one (1) meeting to present design development plans to neighborhood interest group and collect feedback.

Task 5 Deliverables:

- 30% Design Development Drawings submission will be made to DeKalb County and other stakeholders, as digital PDF;
- 30% Design Cost Estimate for each identified phase within the study;
- Distribution and collection of User Groups' feedback;
- PATH/Dekalb County Team Meeting – unlimited number of electronic messaging (i.e. web conference/ conference call)

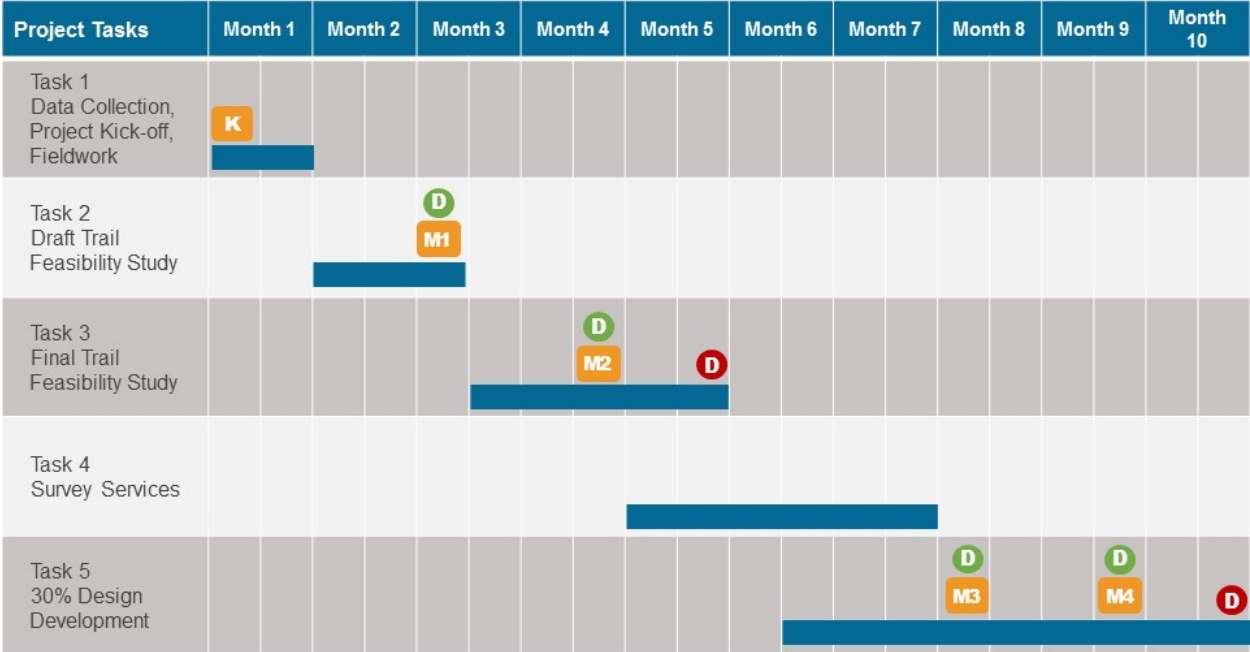
Scope Exclusions:

The following services are not included under this Agreement, and will be furnished by others or their agent, as noted:

- Electrical or mechanical engineering
- Traffic engineering, signal design, or traffic studies and/or signal warrants
- Civil engineering, E&S plans, flood study, or no-rise certificate
- Structural engineering and geotechnical services
- Permitting
- Environmental Site Assessment (ESA)
- Additional drawings & specification revisions due to value engineering
- Easement graphics, final easement legal description documents and exhibit maps (easement plats)

DRAFT PROJECT SCHEDULE:

Emory South Fork Peachtree Creek Trail Feasibility Study Timeline



Task

Meeting Legend:

- K Project Kick-off Meeting
- M Working Group Meeting

Deliverable Legend:

- D Review Submittal
- D Final Deliverable

PROJECT FEE:

Task 1 – Data Collection, Committee Formation, Fieldwork	\$8,890.00
Task 2 – Draft Trail Scoping Study	\$31,870.00
Task 3 - Final Trail Scoping Study	\$39,300.00
Task 4 – Surveying Services	\$107,600.00
Task 5 – 30% Design Development	\$92,340.00
TOTAL	\$280,000.00

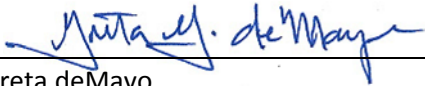
The PATH Foundation shall receive the above project fee as compensation for the described responsibilities within this professional services agreement.

ACCEPTED:

The Client accepts the terms and conditions of this Professional Services Agreement.

PATH Foundation, Inc.:

DeKalb County:



Greta deMayo

Name

PATH Executive Director

Title

Title

November 16, 2022

Date

Date