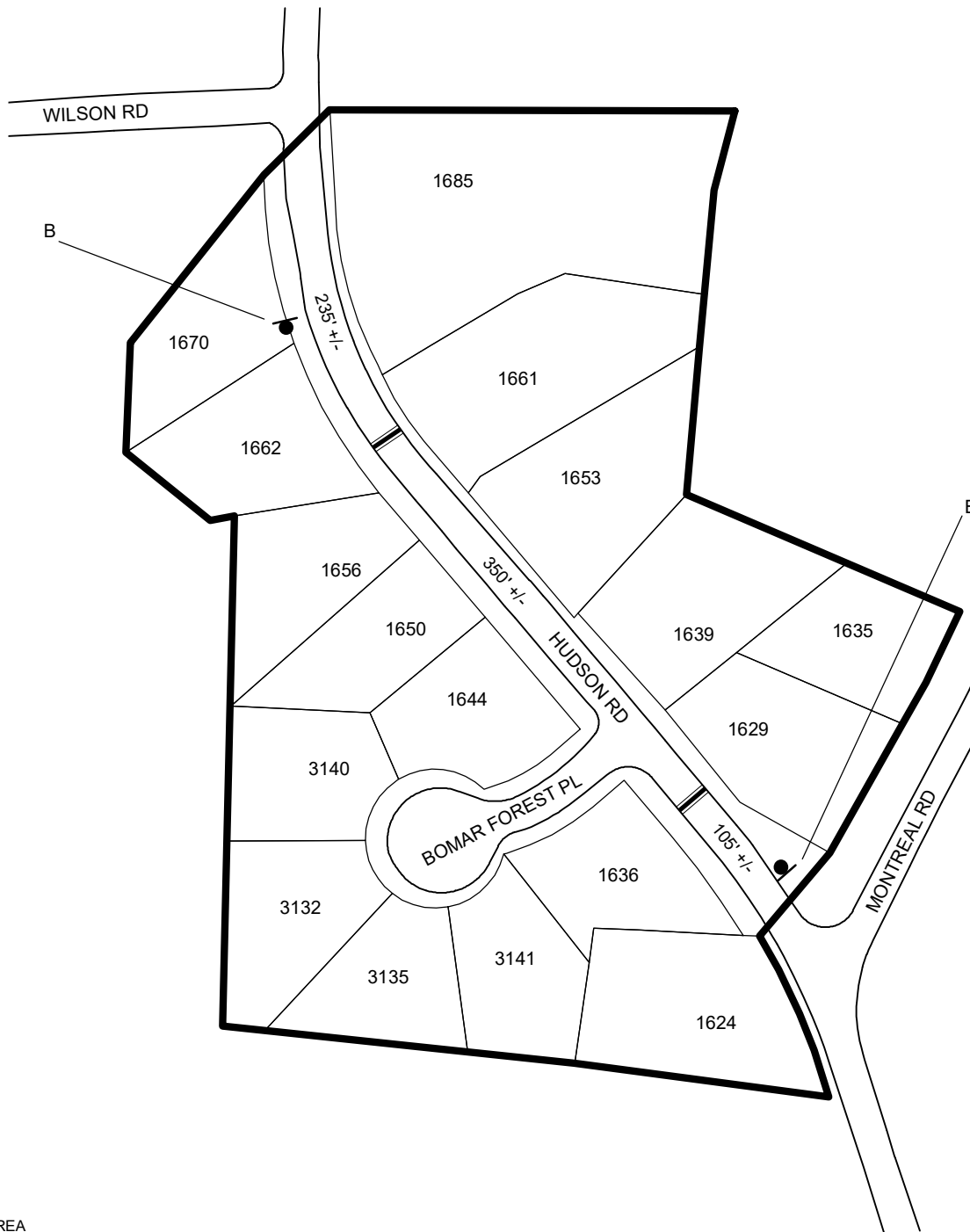


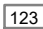
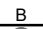


# TRAFFIC CALMING DISTRICT 22-18-00

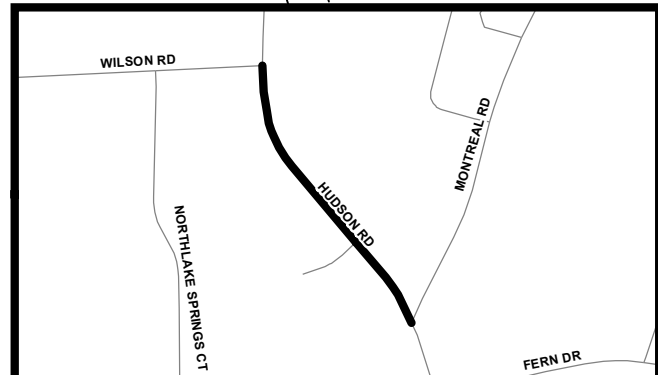


## LEGEND

-  AFFECTED AREA
-  SPEED TABLES (2)
-  PARCEL BOUNDARY AND ADDRESS NUMBER
-  SPEED HUMPS AHEAD SIGN AND ADVISORY  
15 MPH SPEED PLAQUE
- 123 +/- DISTANCE BETWEEN TRAFFIC CALMING MEASURES (CENTER TO CENTER) & DISTANCE BETWEEN TRAFFIC CALMING MEASURES AND END OF STREET

## NOTES:

- 1) NUMBER OF PARCELS IN AFFECTED AREA: 17
- 2) STREET(S) IN AFFECTED AREA: HUDSON RD, BOMAR FOREST PL
- 3) EDGE OF TRAFFIC CALMING MEASURE NOT TO ENCROACH WITHIN 5' OF DRIVEWAY RETURNS



DEKALB COUNTY  
TRANSPORTATION DIVISION  
TRAFFIC CALMING SECTION

DRAWN BY: CH  
REVIEWED BY: CH  
REVIEWED BY:  
REVIEWED BY:

SCALE: N.T.S.

Date: 9/27/2022

HUDSON RD  
DIST: 18 TH LAND LOT: 163 & 164  
COMMISSION DISTRICTS: 2 & 7