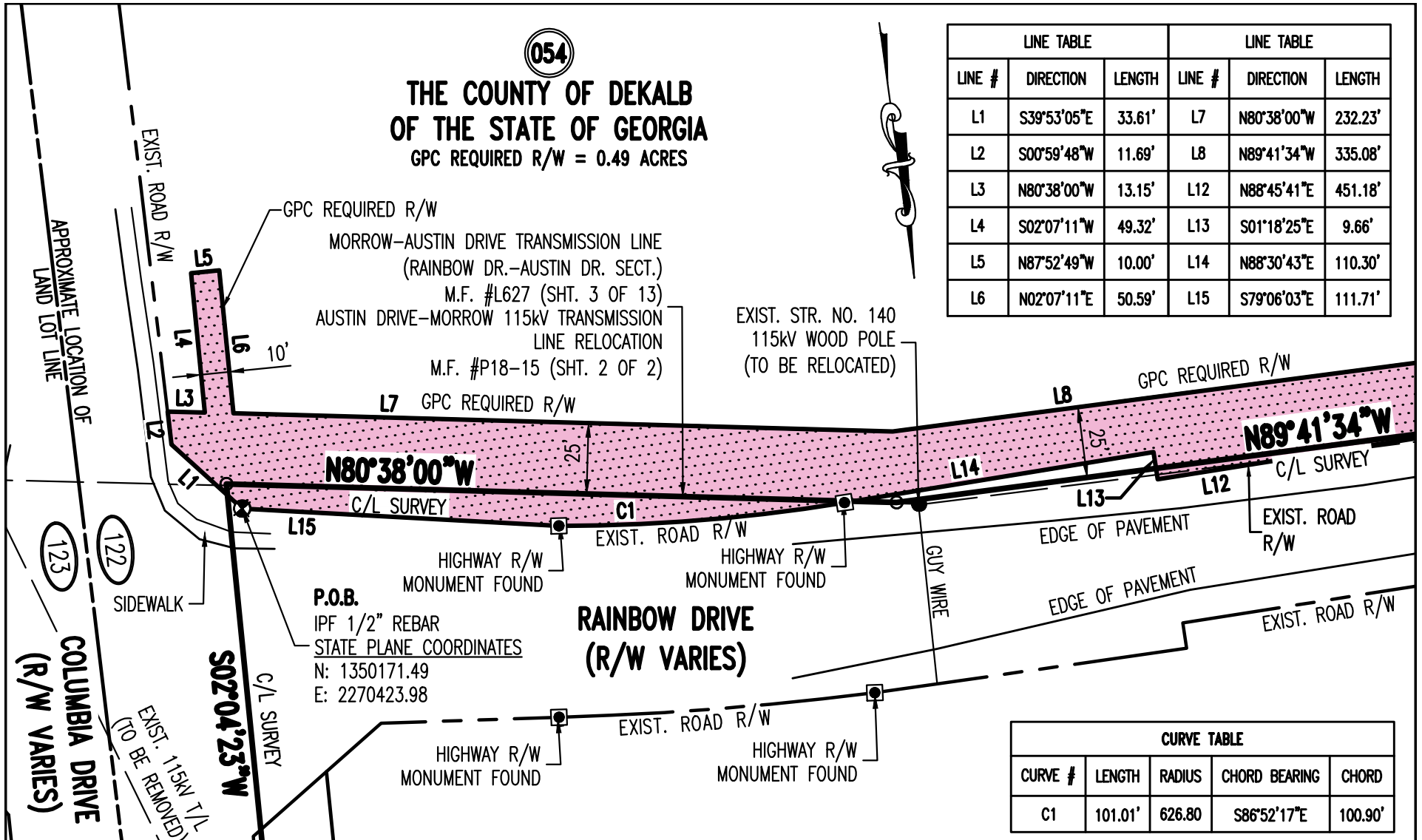


054

THE COUNTY OF DEKALB  
OF THE STATE OF GEORGIA  
GPC REQUIRED R/W = 0.49 ACRES

LINE TABLE			LINE TABLE		
LINE #	DIRECTION	LENGTH	LINE #	DIRECTION	LENGTH
L1	S39°53'05"E	33.61'	L7	N80°38'00"W	232.23'
L2	S00°59'48"W	11.69'	L8	N89°41'34"W	335.08'
L3	N80°38'00"W	13.15'	L12	N88°45'41"E	451.18'
L4	S02°07'11"W	49.32'	L13	S01°18'25"E	9.66'
L5	N87°52'49"W	10.00'	L14	N88°30'43"E	110.30'
L6	N02°07'11"E	50.59'	L15	S79°06'03"E	111.71'



CURVE TABLE				
CURVE #	LENGTH	RADIUS	CHORD BEARING	CHORD
C1	101.01'	626.80	S86°52'17"E	100.90'

REFERENCE: GPC Map File #P468-2 (SHTS. 12 & 13 OF 24)

GEORGIA POWER COMPANY - LAND DEPARTMENT

COORDINATE DATUM: NAD83(2011), GEORGIA STATE PLANE WEST ZONE

<b>SYMBOL LEGEND</b> ○ IRON PIN SET ● IRON PIN FOUND ⊠ ROW MARKER ▨ GPC R/W MONUMENT ▩ QUITCLAIMED R/W <b>PARCEL No. 054</b>	<b>AUSTIN DRIVE - MORROW 115kV TRANSMISSION LINE</b> CROSSING THE PROPERTY OF <b>THE COUNTY OF DEKALB OF THE STATE OF GEORGIA</b> LAND LOT 122, 15TH DISTRICT, DEKALB COUNTY, GEORGIA	DATE: 09/02/2019
		SCALE: 1" = 50'
		DRAWN BY: SNA/JB
		EXHIBIT A
		SHT 1 OF 2

054

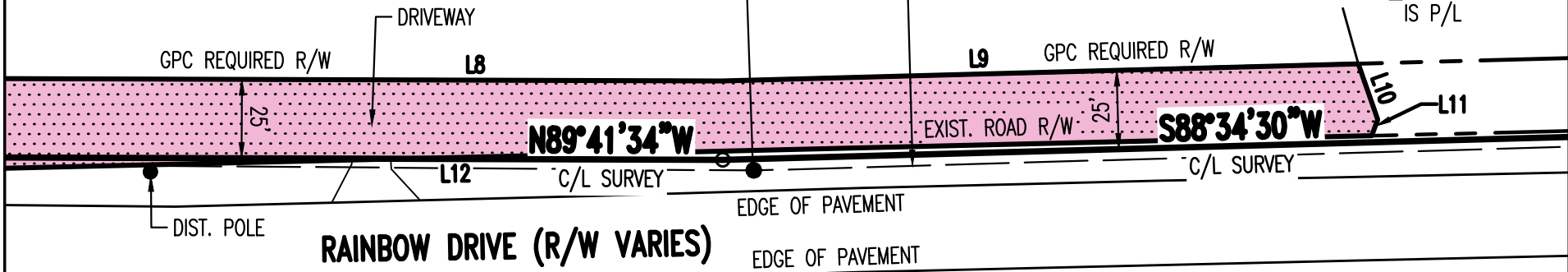
THE COUNTY OF DEKALB  
OF THE STATE OF GEORGIA  
GPC REQUIRED R/W = 0.49 ACRES

MORROW-AUSTIN DRIVE TRANSMISSION LINE  
(RAINBOW DR.-AUSTIN DR. SECT.)  
M.F. #L627 (SHT. 3 OF 13)  
AUSTIN DRIVE-MORROW 115KV TRANSMISSION  
LINE RELOCATION  
M.F. #P18-15 (SHT. 2 OF 2)

N/F  
RALPH E.  
WHITE

STR. NO. 139  
115KV WOOD POLE  
(TO BE RELOCATED)

C/L OF CREEK  
IS P/L



LINE TABLE		
LINE #	DIRECTION	LENGTH
L8	N89°41'34"W	335.08'
L9	S88°34'30"W	202.13'
L10	N19°05'05"W	18.77'
L11	N21°23'56"E	5.44'
L12	N88°45'41"E	451.18'

REFERENCE: GPC Map File #P468-2 (SHTS. 12 & 13 OF 24)

GEORGIA POWER COMPANY - LAND DEPARTMENT

COORDINATE DATUM: NAD83(2011), GEORGIA STATE PLANE WEST ZONE

**SYMBOL LEGEND**

- ⊙ IRON PIN SET
- EXISTING POLE
- ⊙ IRON PIN FOUND
- ⊗ POINT OF BEGINNING (POB)
- ⊠ ROW MARKER
- POC= POINT OF COMMENCEMENT
- ▨ GPC R/W MONUMENT
- ▨ GPC REQUIRED R/W
- ▨ QUITCLAIMED R/W
- ▨ GPC EXISTING R/W

PARCEL No. 054

**AUSTIN DRIVE - MORROW 115KV  
TRANSMISSION LINE**

CROSSING THE PROPERTY OF

**THE COUNTY OF DEKALB OF THE STATE OF GEORGIA**  
LAND LOT 122, 15TH DISTRICT, DEKALB COUNTY, GEORGIA

DATE: 09/02/2019

SCALE: 1" = 50'

DRAWN BY: SNA/JB

EXHIBIT A

SHT 2 OF 2