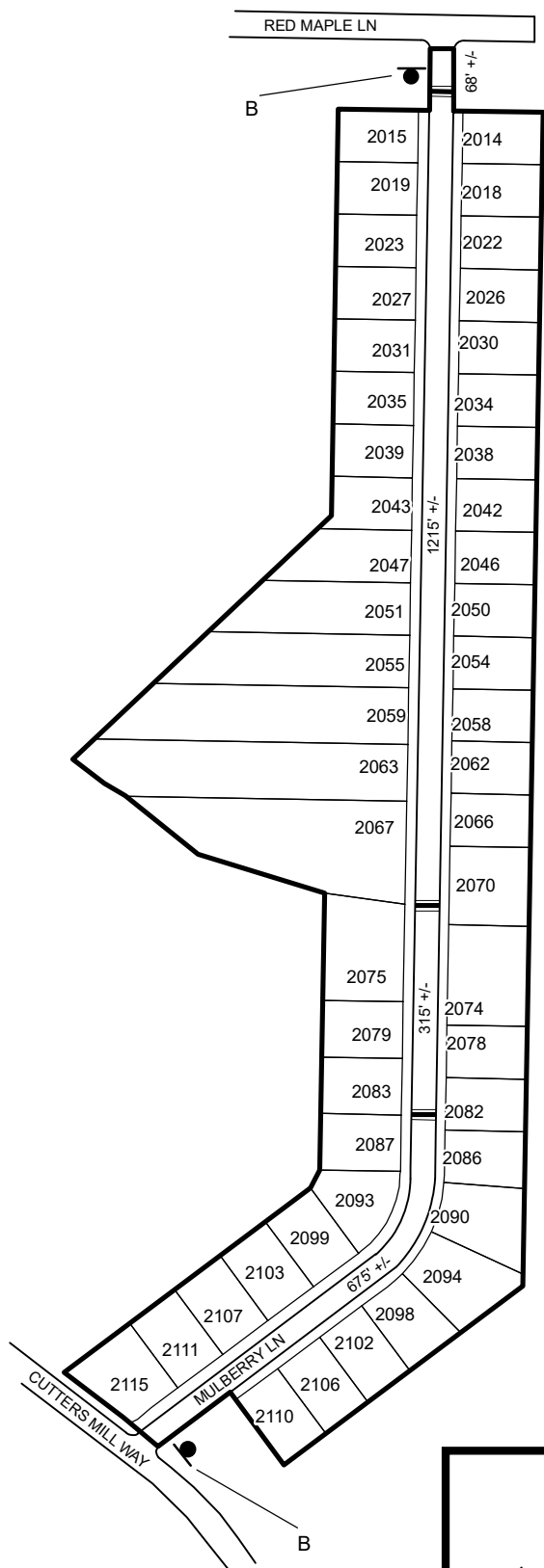


TRAFFIC CALMING DISTRICT 22-16-00



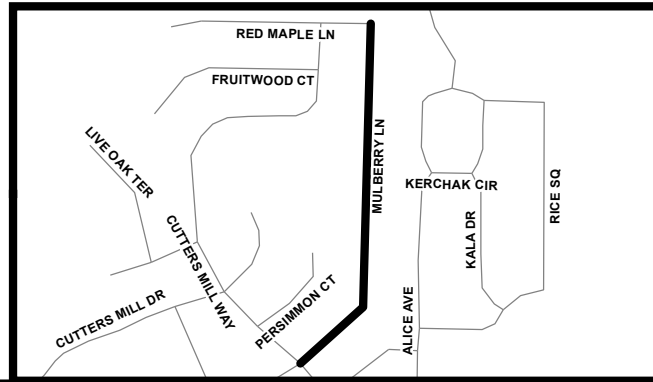
LEGEND

- AFFECTED AREA
- SPEED TABLES (3)
- PARCEL BOUNDARY AND ADDRESS NUMBER
- SPEED HUMPS AHEAD SIGN AND ADVISORY
- 15 MPH SPEED PLAQUE

123 +/- DISTANCE BETWEEN TRAFFIC CALMING MEASURES (CENTER TO CENTER) & DISTANCE BETWEEN TRAFFIC CALMING MEASURES AND END OF STREET

NOTES:

- 1] NUMBER OF PARCELS IN AFFECTED AREA: 49
- 2] STREET(S) IN AFFECTED AREA: MULBERRY LN
- 3] EDGE OF TRAFFIC CALMING MEASURE NOT TO ENCROACH WITHIN 5' OF DRIVEWAY RETURNS



DEKALB COUNTY TRANSPORTATION DIVISION TRAFFIC CALMING SECTION	DRAWN BY: CH	SCALE: N.T.S. Date: 2/22/2022	MULBERRY LN
	REVIEWED BY: CH		DIST: 16 TH LAND LOT: 158
	REVIEWED BY:	COMMISSION DISTRICTS: 5 & 7	
	REVIEWED BY:		