

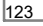





TRAFFIC CALMING DISTRICT 24-18-00

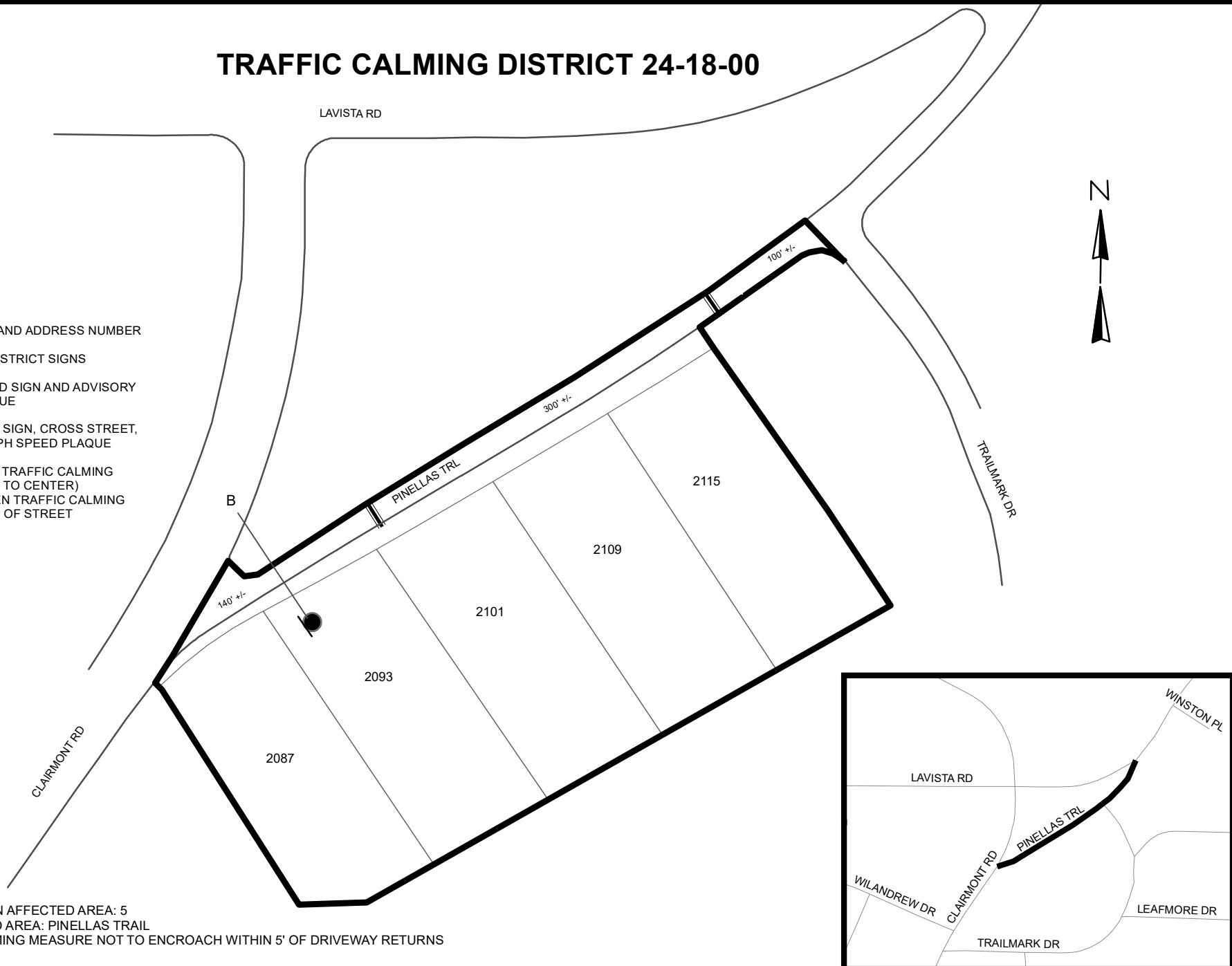
LAVISTA RD



LEGEND

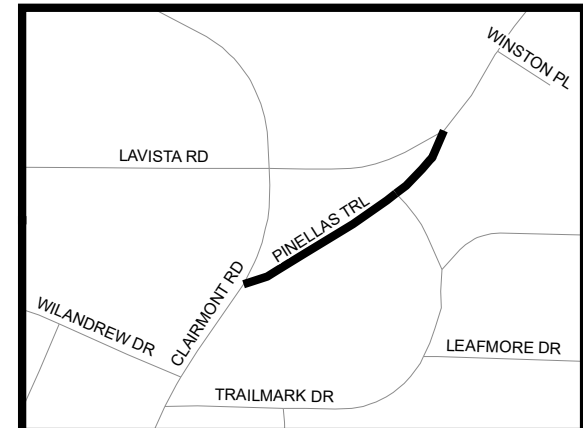
-  AFFECTED AREA
-  SPEED TABLES (2)
-  PARCEL BOUNDARY AND ADDRESS NUMBER
-  TRAFFIC CALMING DISTRICT SIGNS
-  SPEED HUMPS AHEAD SIGN AND ADVISORY 15 MPH SPEED PLAQUE
-  SPEED HUMP AHEAD SIGN, CROSS STREET, AND ADVISORY 15 MPH SPEED PLAQUE

123 +/- DISTANCE BETWEEN TRAFFIC CALMING MEASURES (CENTER TO CENTER) & DISTANCE BETWEEN TRAFFIC CALMING MEASURES AND END OF STREET



NOTES:

- 1] NUMBER OF PARCELS IN AFFECTED AREA: 5
- 2] STREET(S) IN AFFECTED AREA: PINELLAS TRAIL
- 3] EDGE OF TRAFFIC CALMING MEASURE NOT TO ENCROACH WITHIN 5' OF DRIVEWAY RETURNS



DEKALB COUNTY
TRANSPORTATION DIVISION
TRAFFIC CALMING SECTION

DRAWN BY: AE

REVIEWED BY: AE

REVIEWED BY:

REVIEWED BY:

SCALE: N.T.S.

Date: 10/8/2024

PINELLAS TRAIL

DIST: 18 TH LAND LOT: 112

COMMISSION DISTRICTS: 2 & 6