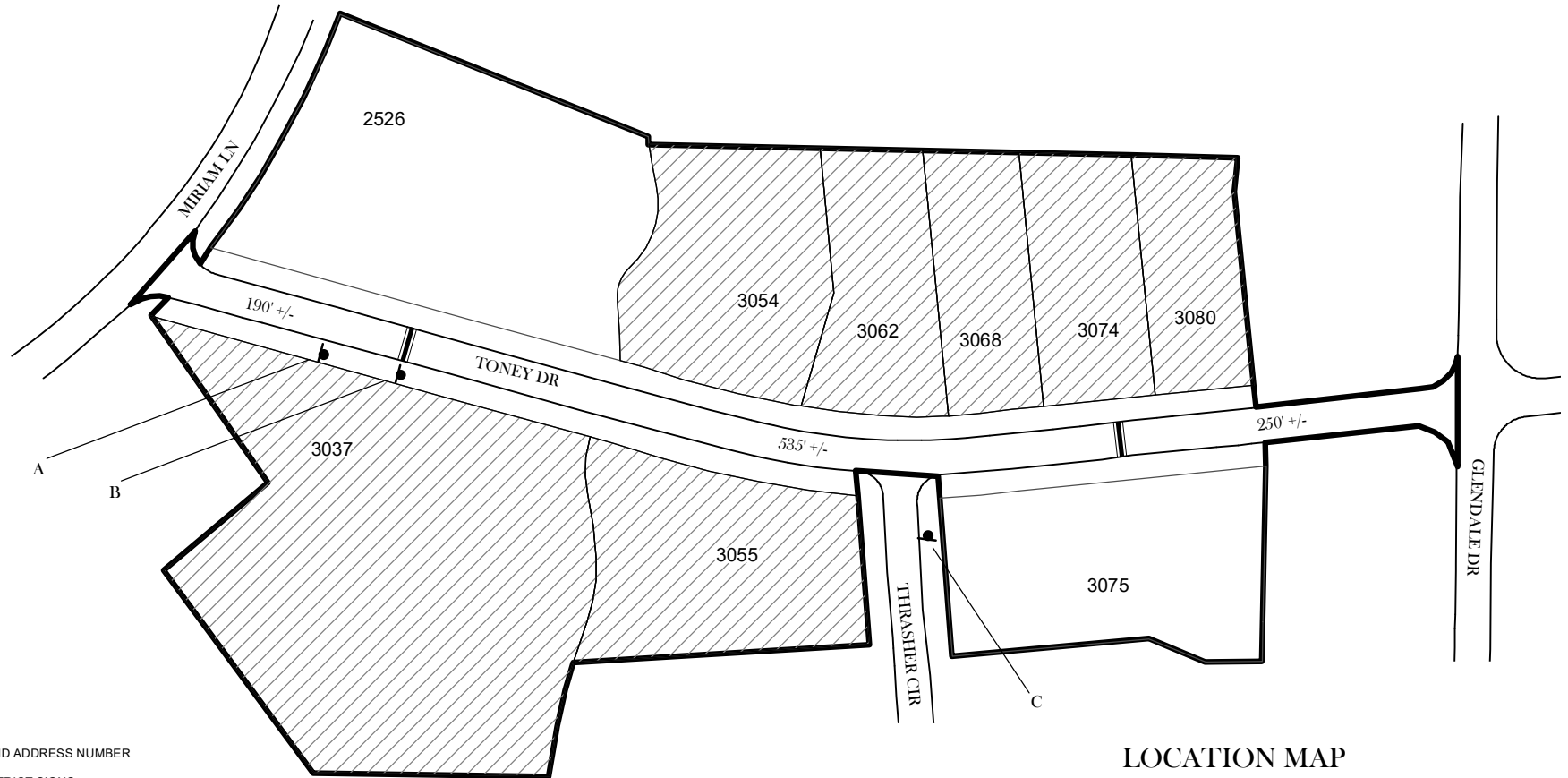

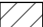

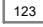





TRAFFIC CALMING DISTRICT 18-15-10



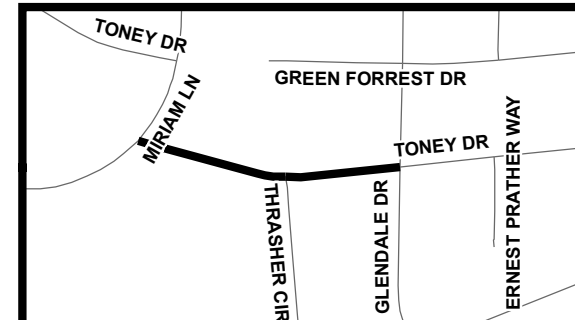
LEGEND

-  AFFECTED AREA
-  YES VOTES (7)
-  SPEED TABLES (2)
-  PARCEL BOUNDARY AND ADDRESS NUMBER
-  A TRAFFIC CALMING DISTRICT SIGNS
-  B SPEED HUMPS AHEAD SIGN AND ADVISORY 15 MPH SPEED PLAQUE
-  C SPEED HUMP AHEAD SIGN, CROSS STREET, AND ADVISORY 15 MPH SPEED PLAQUE
- 123 +/- DISTANCE BETWEEN TRAFFIC CALMING MEASURES (CENTER TO CENTER) & DISTANCE BETWEEN TRAFFIC CALMING MEASURES AND END OF STREET

NOTES:

- 1] NUMBER OF PARCELS IN AFFECTED AREA: 9
- 2] STREET(S) IN AFFECTED AREA: TONEY DR, MIRIAM LN
- 3] EDGE OF TRAFFIC CALMING MEASURE NOT TO ENCROACH WITHIN 5' OF DRIVEWAY RETURNS

LOCATION MAP



DEKALB COUNTY
TRANSPORTATION DIVISION
TRAFFIC CALMING SECTION

DRAWN BY: CH

REVIEWED BY: CH

REVIEWED BY: AE

REVIEWED BY: PGK

SCALE: N.T.S.

Date: 12/11/2018

TONEY DR

DIST: 15 TH LAND LOT: 136

COMMISSION DISTRICTS: 3 & 7