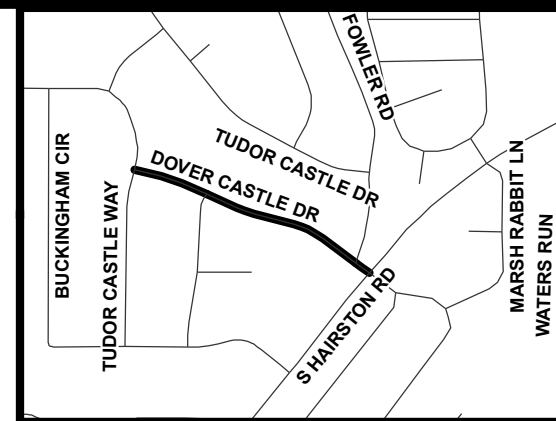
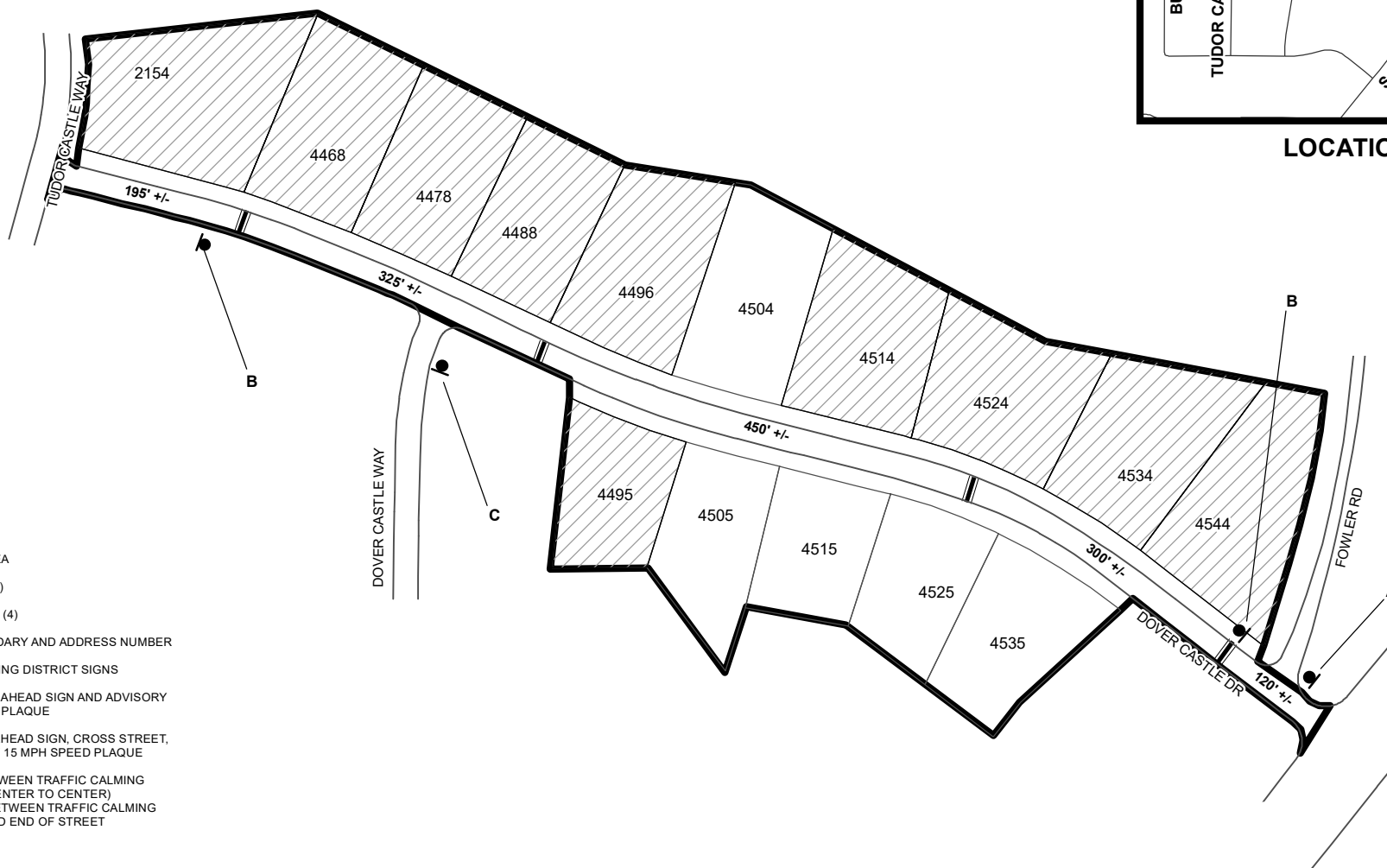







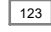


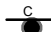
## TRAFFIC CALMING DISTRICT 18-15-09



LOCATION MAP



### LEGEND

-  AFFECTED AREA
-  YES VOTES (10)
-  SPEED TABLES (4)
-  PARCEL BOUNDARY AND ADDRESS NUMBER
-  TRAFFIC CALMING DISTRICT SIGNS
-  SPEED HUMPS AHEAD SIGN AND ADVISORY 15 MPH SPEED PLAQUE
-  SPEED HUMP AHEAD SIGN, CROSS STREET, AND ADVISORY 15 MPH SPEED PLAQUE
- 123 +/- DISTANCE BETWEEN TRAFFIC CALMING MEASURES (CENTER TO CENTER) & DISTANCE BETWEEN TRAFFIC CALMING MEASURES AND END OF STREET

### NOTES:

- 1] NUMBER OF PARCELS IN AFFECTED AREA: 15
- 2] STREET(S) IN AFFECTED AREA: DOVER CASTLE DR, TUDOR CASTLE WAY
- 3] EDGE OF TRAFFIC CALMING MEASURE NOT TO ENCROACH WITHIN 5' OF DRIVEWAY RETURNS

DEKALB COUNTY  
TRANSPORTATION DIVISION  
TRAFFIC CALMING SECTION

DRAWN BY: CH

REVIEWED BY: CH

REVIEWED BY: AE

REVIEWED BY: PGK

SCALE: N.T.S.

Date: 12/11/2018

DOVER CASTLE DR

DIST: 15 TH LAND LOT: 159 & 160

COMMISSION DISTRICTS: 5 & 7