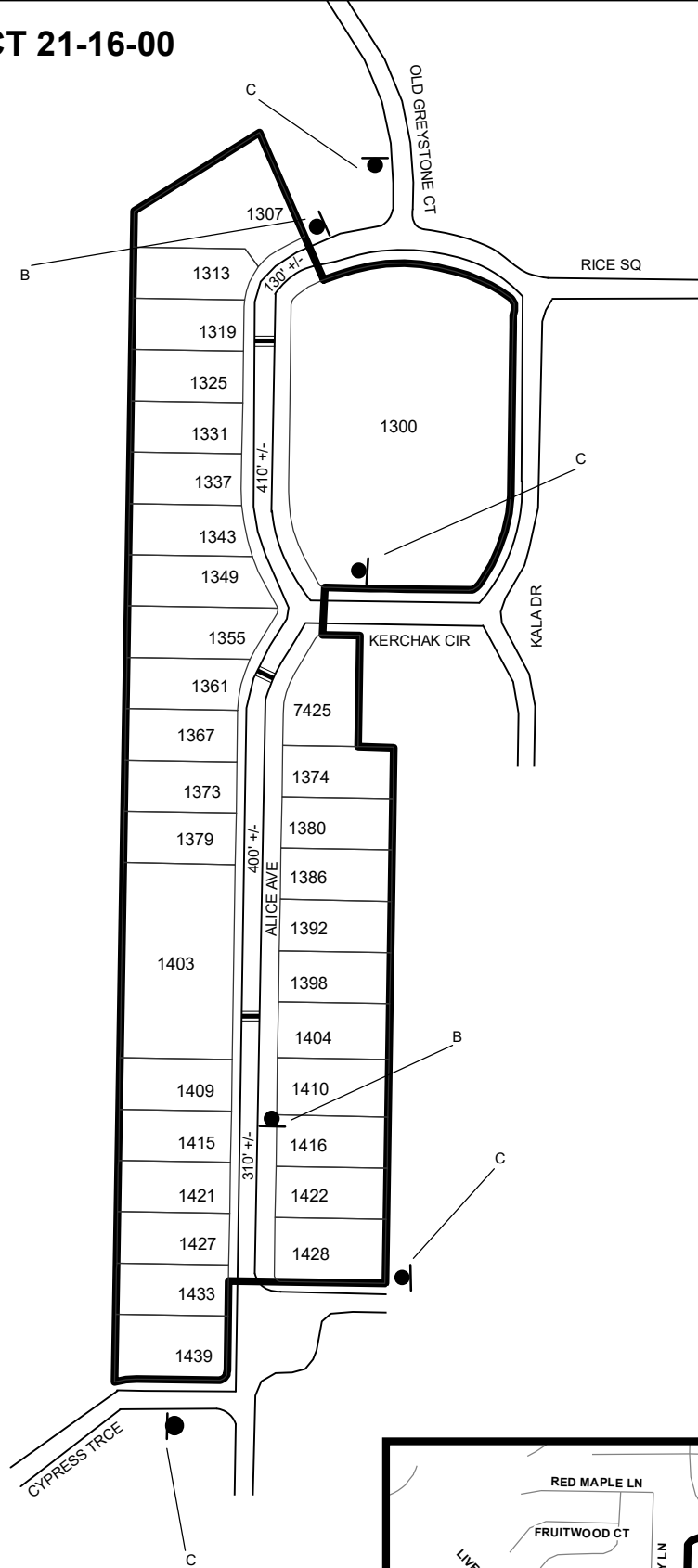







# TRAFFIC CALMING DISTRICT 21-16-00

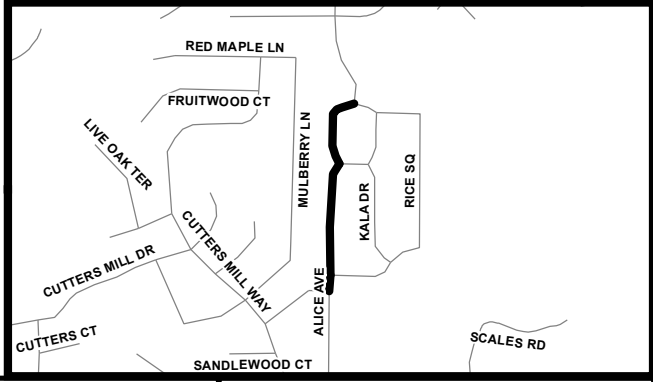


### LEGEND

-  AFFECTED AREA
-  SPEED TABLES (3)
-  PARCEL BOUNDARY AND ADDRESS NUMBER
-  SPEED HUMPS AHEAD SIGN AND ADVISORY 15 MPH SPEED PLAQUE
-  SPEED HUMP AHEAD SIGN, CROSS STREET, AND ADVISORY 15 MPH SPEED PLAQUE
- 123 +/- DISTANCE BETWEEN TRAFFIC CALMING MEASURES (CENTER TO CENTER) & DISTANCE BETWEEN TRAFFIC CALMING MEASURES AND END OF STREET

### NOTES:

- 1] NUMBER OF PARCELS IN AFFECTED AREA: 32
- 2] STREET(S) IN AFFECTED AREA: ALICE AVE, KERCHAK CIR
- 3] EDGE OF TRAFFIC CALMING MEASURE NOT TO ENCROACH WITHIN 5' OF DRIVEWAY RETURNS



DEKALB COUNTY  
TRANSPORTATION DIVISION  
TRAFFIC CALMING SECTION

DRAWN BY: CH  
REVIEWED BY: CH  
REVIEWED BY:  
REVIEWED BY:

SCALE: N.T.S.  
Date: 2/23/2021

ALICE AVE  
DIST: 16 TH LAND LOT: 163  
COMMISSION DISTRICTS: 5 & 7