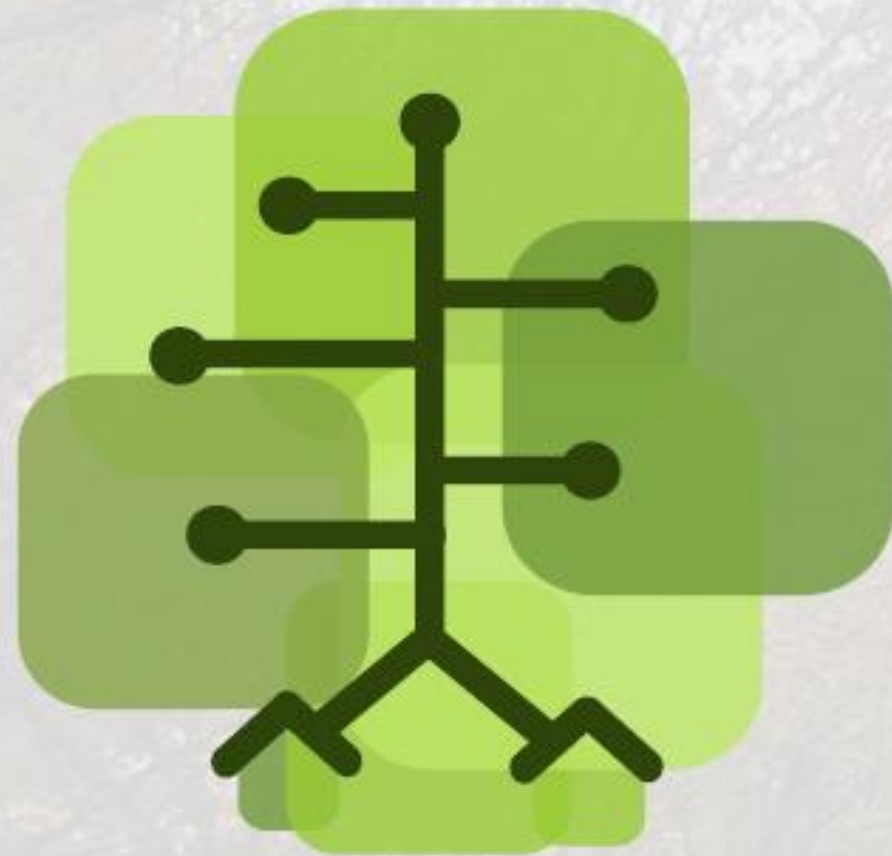




DeKalb County
GEORGIA



DEKALB STONE MOUNTAIN TRAIL MASTER PLAN

August 2025



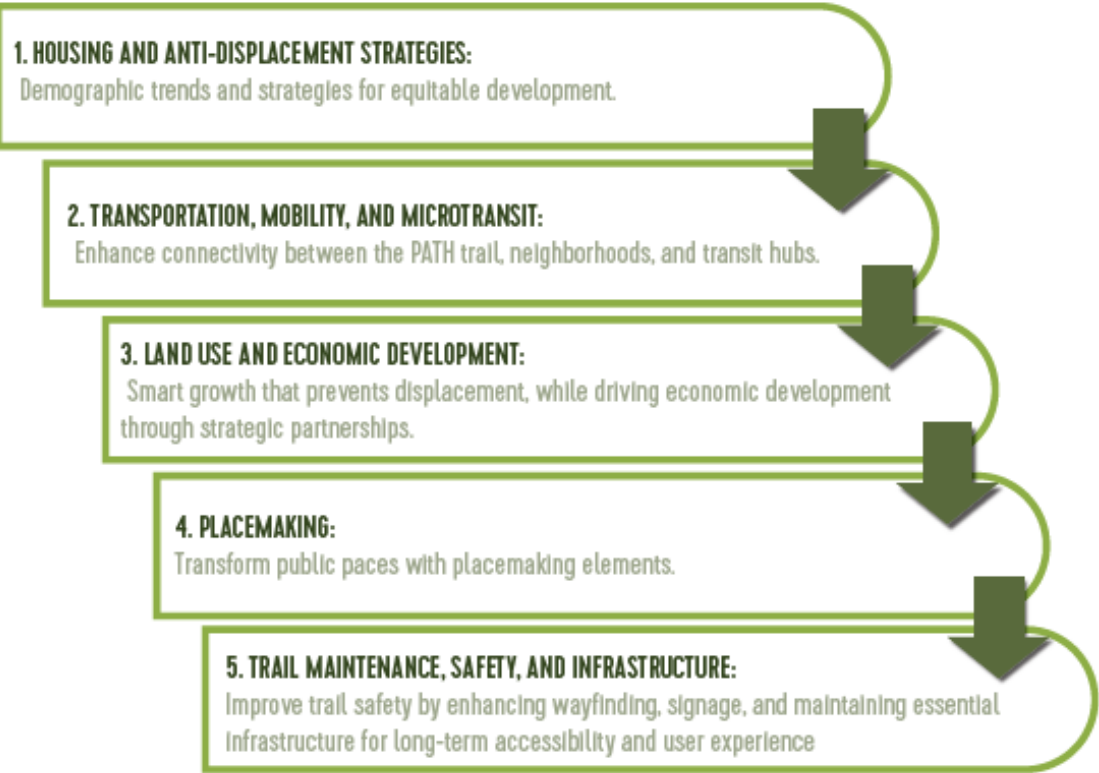
PROJECT OVERVIEW

VISION AND PURPOSE

Create a cohesive corridor through the lens of anti-displacement

The purpose of this study is to develop enhanced access to greenways and trails, transit, and enhance connectivity to institutions and gathering spaces along the Stone Mountain Trail Master Plan.

GOALS

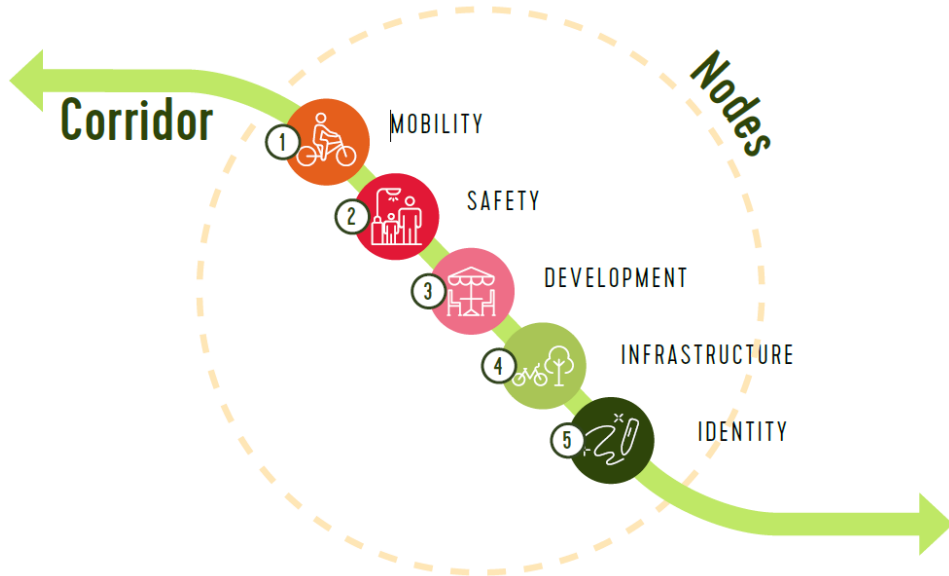


PROJECT TIMELINE



FRAMEWORK

2 scales, 3 nodes, 1 unifying trail



COMMUNITY VOICES WHO HAVE WE REACHED?

3500+ people reached!

Check out the
project website
here!

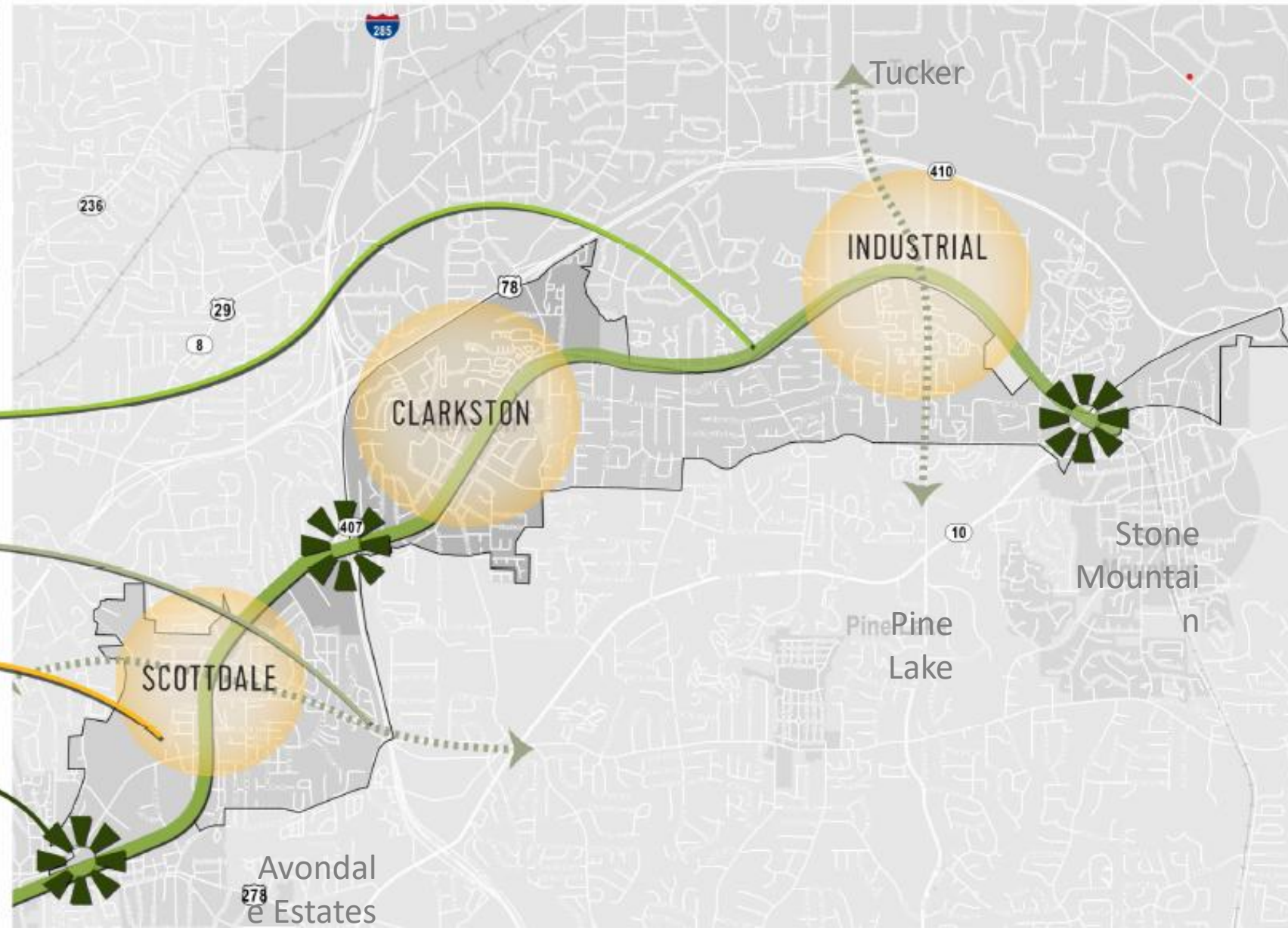
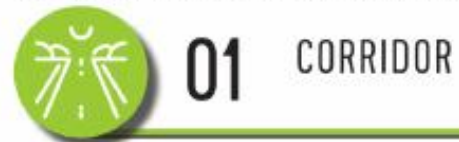


Listening to and learning from those who live, work, and invest their time within the community was a vital part of the community engagement process.

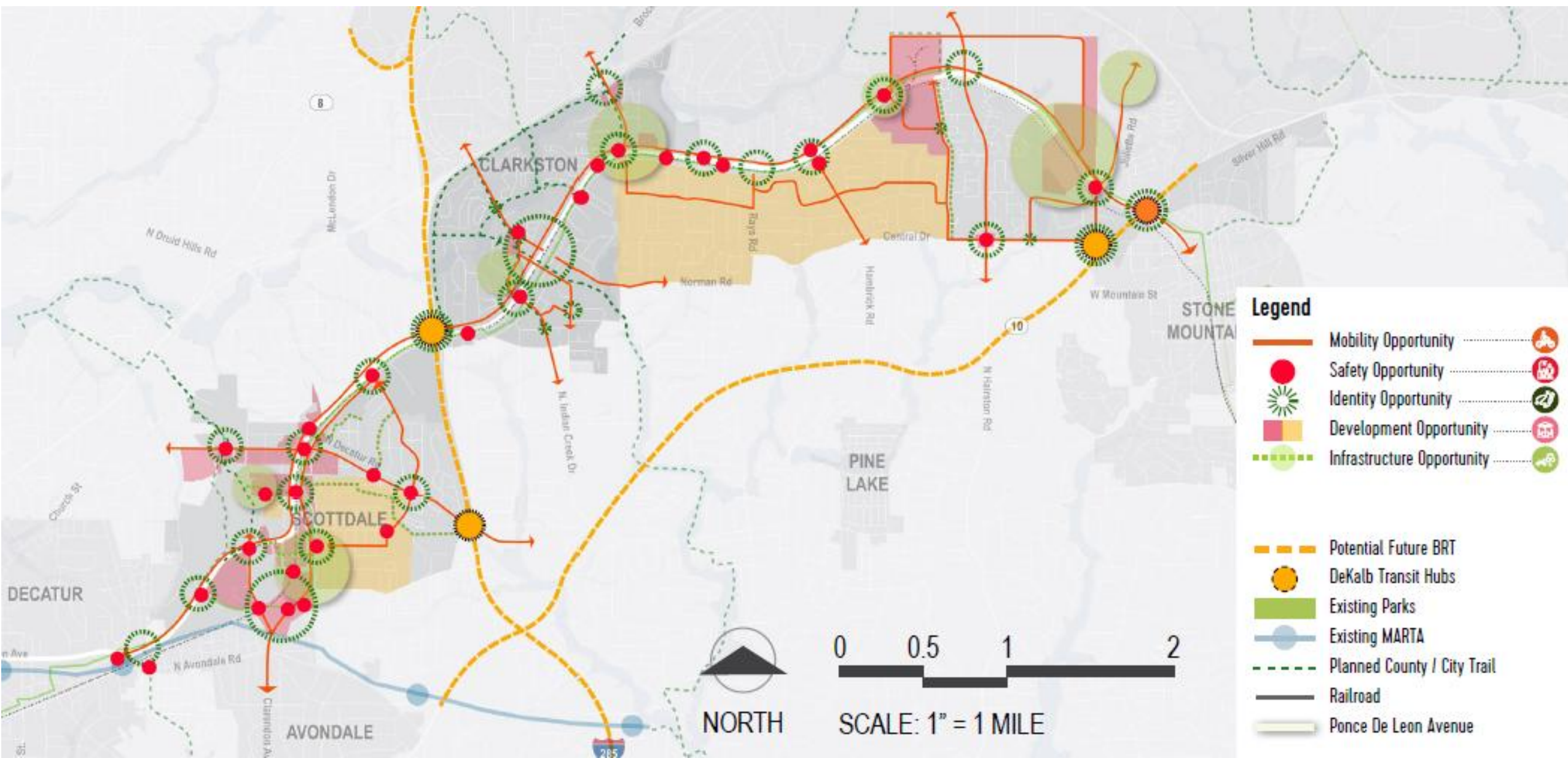


STUDY AREA COMPONENTS

The study area is highly diverse in terms of demographics, development, housing, and character. To create a cohesive and connected corridor, the design framework applies a scaled approach focused on four layers: nodes, gateways, streetscapes, and the overall corridor. Each layer provides specific recommendations to improve connectivity, community identity, and access across the trail and its adjacent neighborhoods.



TRAIL DISTRICT DESIGN RECOMMENDATIONS



TRAIL DESIGN RECOMMENDATIONS



1 BOLD TRAIL RIBBON + INTERSECTION ART

Repeating sidewalk art creates a consistent character, highlights the trail at intersections, and introduces attractive design throughout the corridor.

2 ICONIC BOLD SITE FURNISHINGS

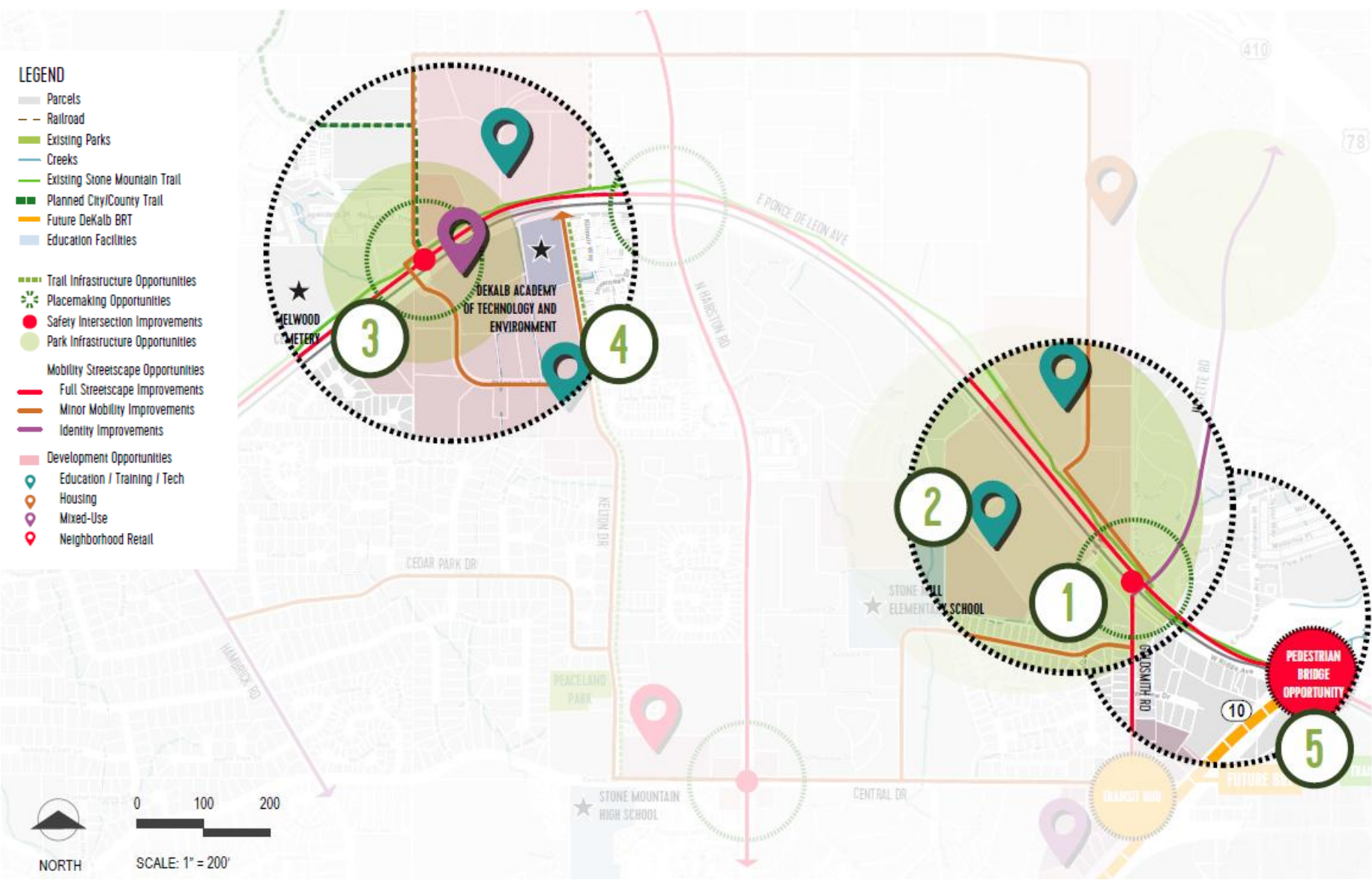
Vibrant site furnishings provide a repeated element for a signature and recognizable features. Attractive and bold benches, bike racks, water fountains could be utilized.

3 DESIGNED INTERACTIVE WALL

In order to create a sense of place that crosses multiple cities, major roads, and railroads the scale and intent needs to be BIG.

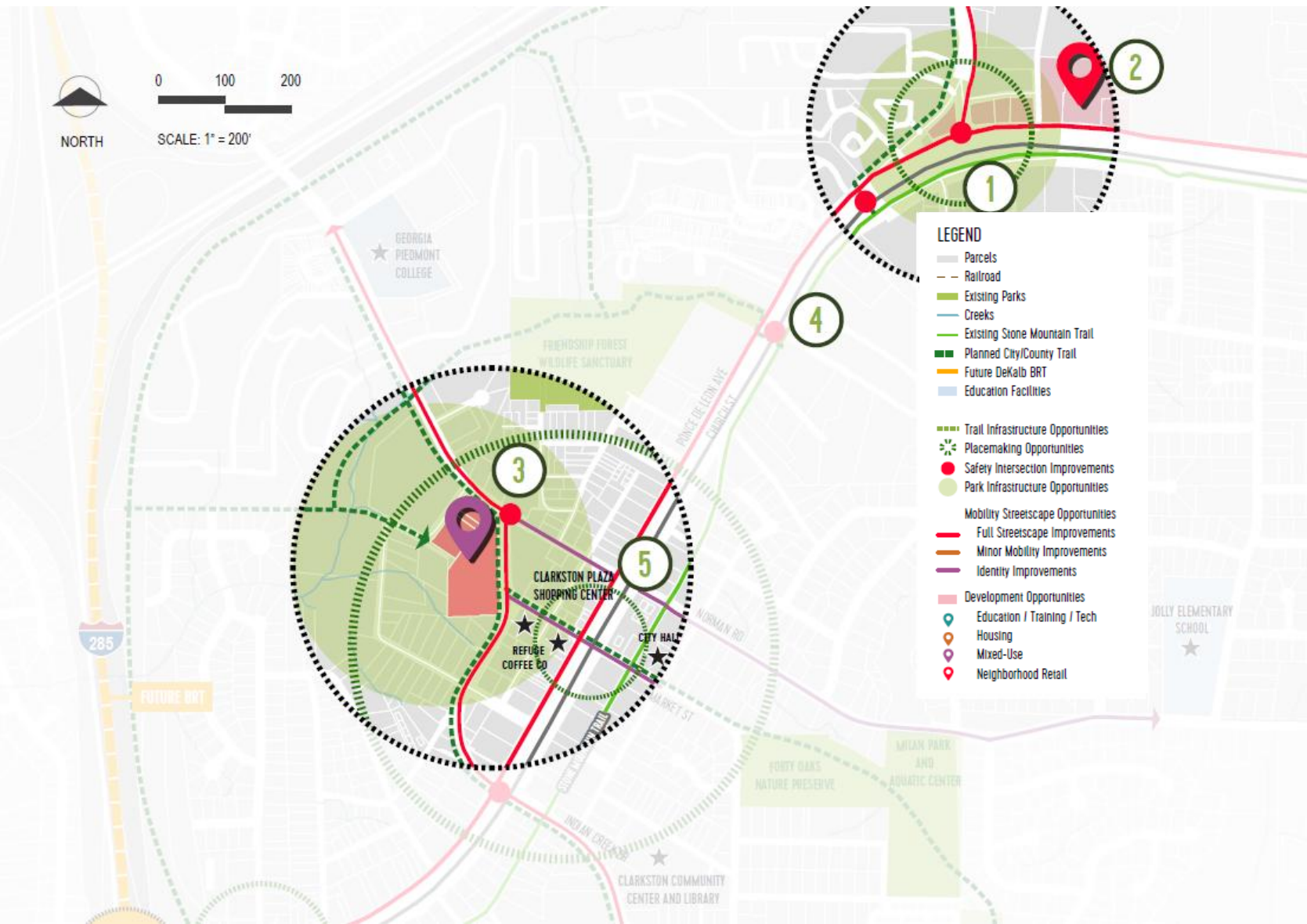


NODAL RECOMMENDATIONS- The Industrial Node



- 1 GOLDSMITH**
The Goldsmith and Ridge intersection across the railroad and Ponce De Leon. Connects to Tucker investments.
- 2 NEW PARK**
Greenspace addition in vacant or underutilized parcels.
- 3 NEW INTERSECTION**
New intersection addition to add connections to new developments and neighborhoods.
- 4 NEW TRAIL**
Trail connection to parks and neighborhoods.
- 5 PEDESTRIAN BRIDGE**
Pedestrian Bridge over State Road 10 / Memorial Drive

NODAL RECOMMENDATIONS- Clarkston Node



2

1

BROCKETT INTERSECTION

The Brockett intersection needs to remove the slip lanes to force cars to stop and improve safety for all modes.

2

BROCKETT DEVELOPMENT

Infill neighborhood services is key to increasing activity for residents.

3

DOWNTOWN DEVELOPMENT

New mixed use development building off the success of the existing downtown.

4

CHURCH STREET RAILROAD CROSSING

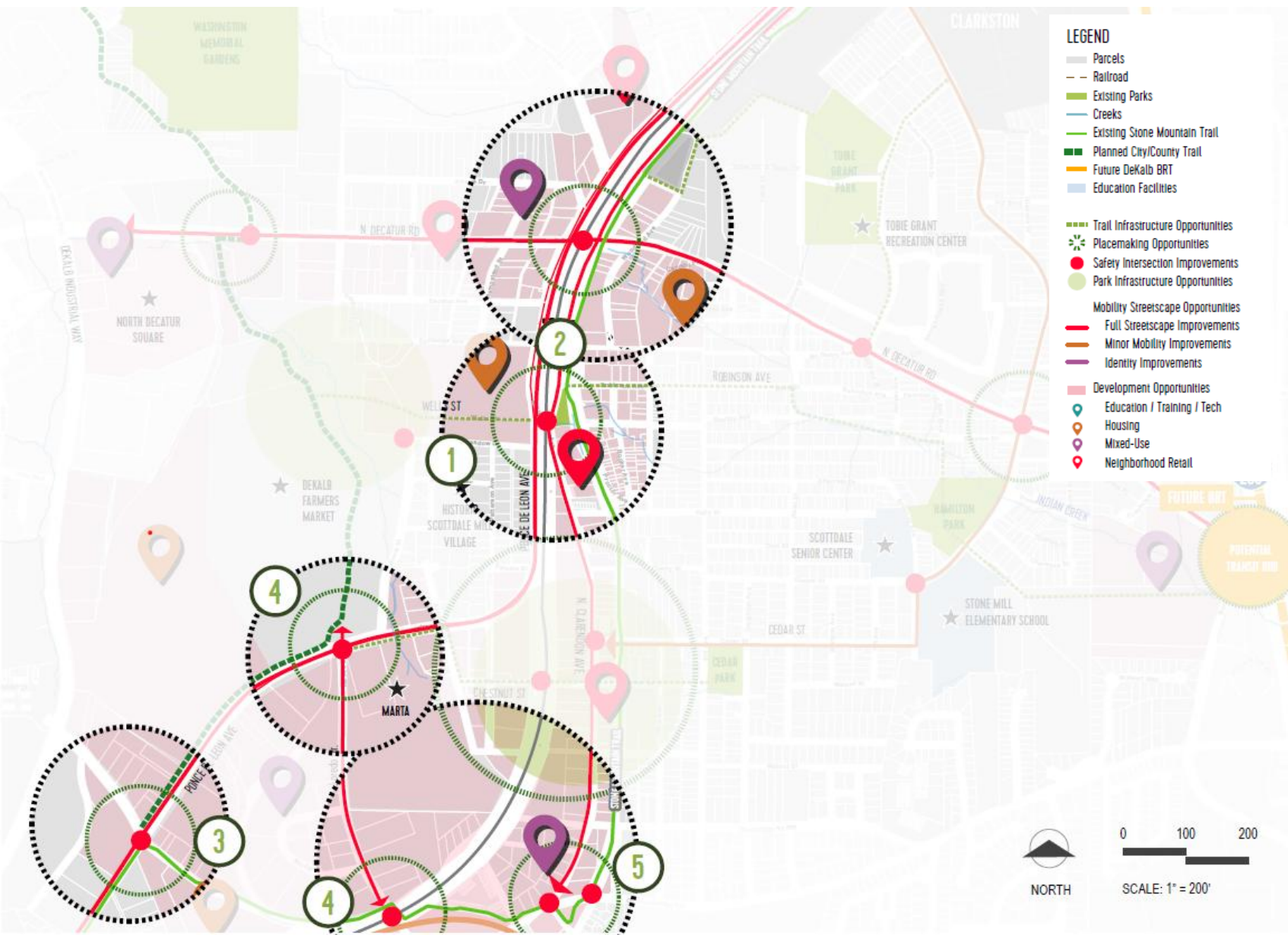
Addition of a pedestrian crossing, visibility and safety enhancements, and wayfinding will increase access to the trail. A trail head is also key to directing users around Clarkston.

5

DOWNTOWN IDENTITY ENHANCEMENTS

Specific enhancements along Ponce De Leon will bring the identity of the community to the forefront of the city.

NODAL RECOMMENDATIONS- Scottdale Node



3

1

INTERSECTION ENHANCEMENTS

The Wells St, N. Clarendon, Ponce, and Church Street intersection is a major hazard for all modes of travel. Improvements here would fix many of the connectivity issues of the district and connect regional gaps.

2

INFILL DEVELOPMENT

Infill development along this area of the Ponce corridor can add needed density and services to the community.

3

Enhanced INTERSECTION

The intersection enhancements along DeKalb industrial way is a key gateway that connects this region to MARTA stations and the greater ATL area.

4

LOREDO DR INTERSECTIONS

Adding visibility, safety, and placemaking elements can build off of the streetscape improvements and connect Avondale Estates to the Farmers Market.

5

TRAIL ALIGNMENT

With new development in the area the roads should be realigned to create safe intersections and a fully connected trail.

NEXT STEPS

- PECS Meeting August 26th
- Final Open House September 8th
- Planning Commission Presentation September 9th
- BOC Presentation and Adoption September 25th



Thank you!



DeKalb
Stone Mountain Trail
MASTER PLAN



POND